

# PETALS TO PISTILS



Linda Stewart    May 30, 2023



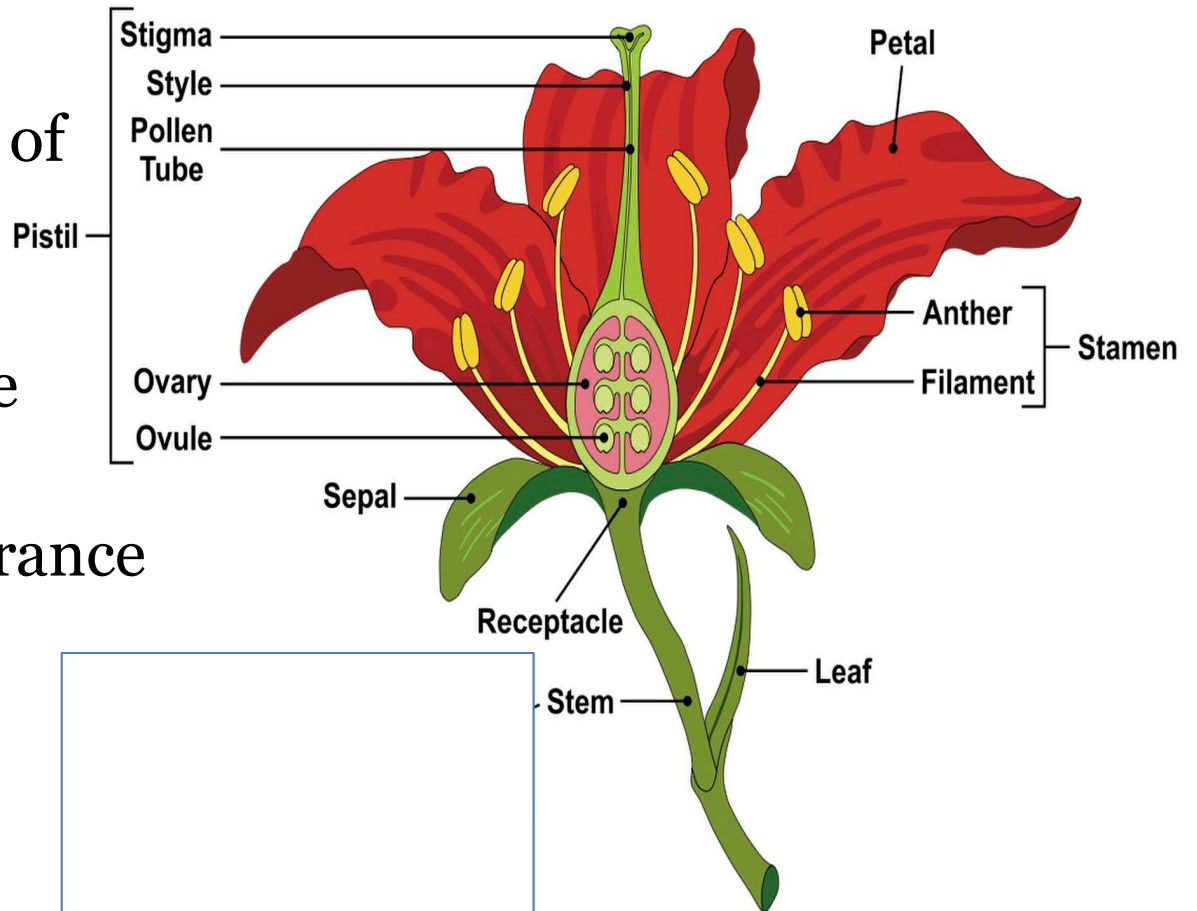
**UNIVERSITY OF CALIFORNIA**  
Agriculture and Natural Resources

■ UC Master Gardener Program

# PETALS TO PISTILS

## Flower Dissection Lab

- PURPOSE:
- Study the structure of various flowers
- Identify male and female reproductive organs
- Describe the appearance of flower parts



# Botanical vocabulary terms

- Anther
- Bract
- Calyx
- Complete flower
- Corolla
- Determinate
- Dioecious
- Filament
- Head
- Imperfect flower
- Incomplete flower
- Indeterminate
- Inflorescence
- Monoecious
- Ovary
- Perfect flower
- Petals
- Pistil
- Pistillate
- Pollen
- Sepals
- Spadix
- Spur
- Stamen
- Stigma
- Style
- Tepals
- Venation

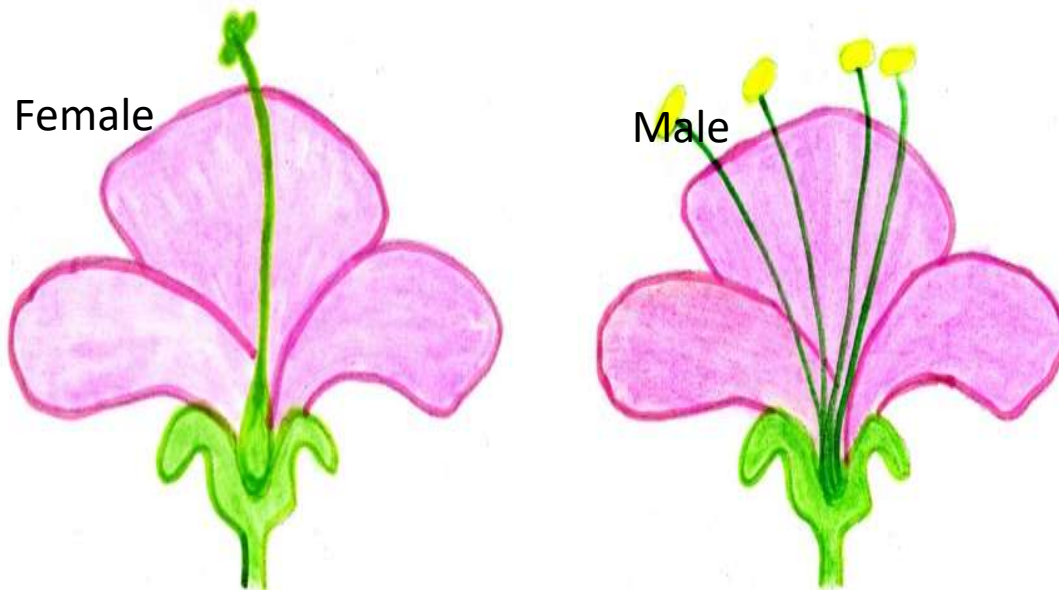


# PETALS TO PISTILS

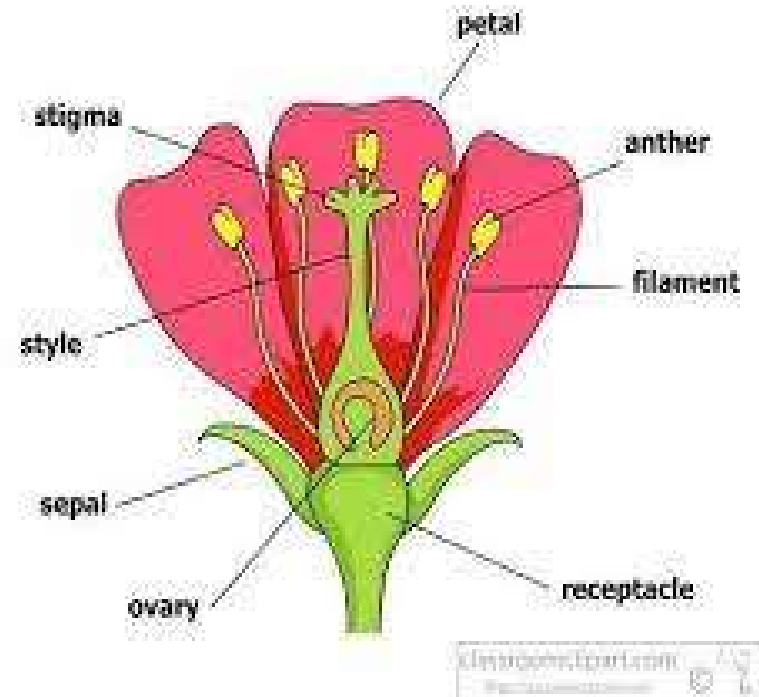
## Flower Dissection Lab

Is your flower perfect or imperfect?

Imperfect Flower



Perfect Flower

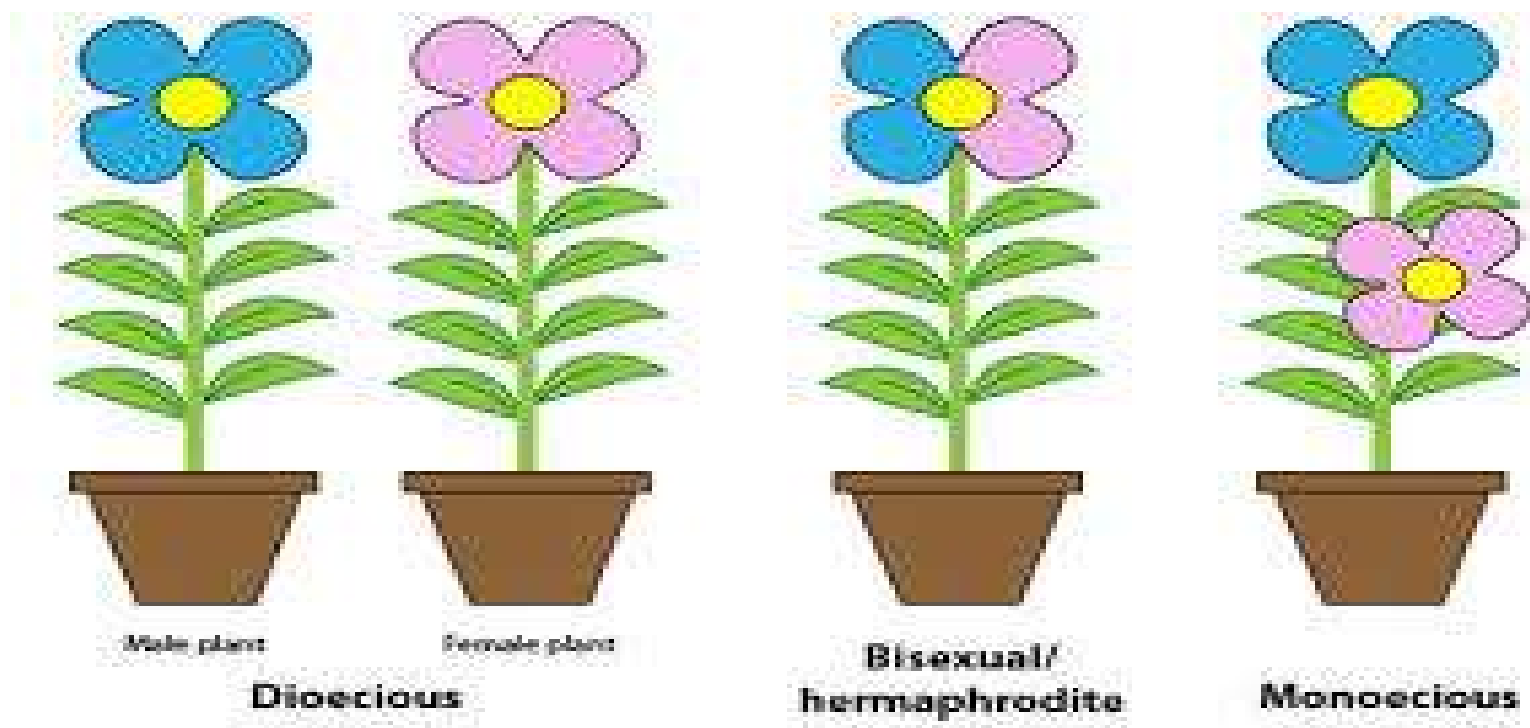




# PETALS TO PISTILS

## Flower Dissection Lab

Is your plant monoecious or dioecious?



# PERFECT FLOWER Asiatic Lily



# MONECIOUS FLOWER Begonia



# DIOECIOUS FLOWER Gingko tree

Female



Male



Images: Marcin Kolasinski - Wikimedia Commons





# HOW MANY FLOWERS DO YOU SEE?

Trick Question



**UNIVERSITY OF CALIFORNIA**  
Agriculture and Natural Resources

■ UC Master Gardener Program

# HOW MANY FLOWERS DO YOU SEE?

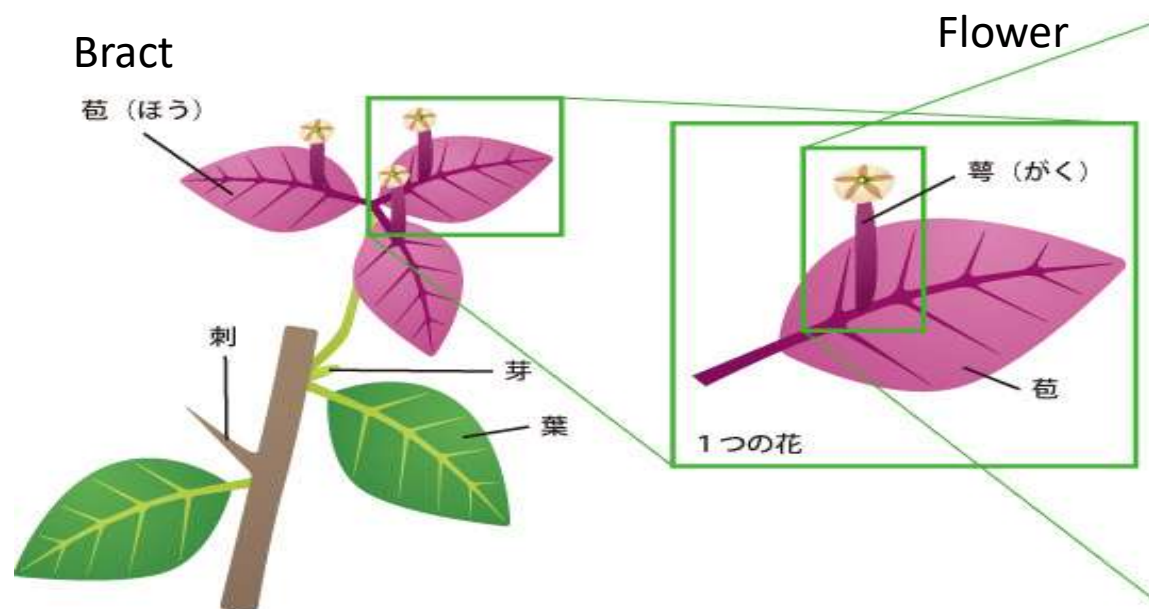
Another Trick Question



**UNIVERSITY OF CALIFORNIA**  
Agriculture and Natural Resources

■ UC Master Gardener Program

# HOW MANY FLOWERS DO YOU SEE?



# MORE BRACTS Kangaroo Paw





# HOW MANY FLOWERS DO YOU SEE?

Another Trick Question



**UNIVERSITY OF CALIFORNIA**  
Agriculture and Natural Resources

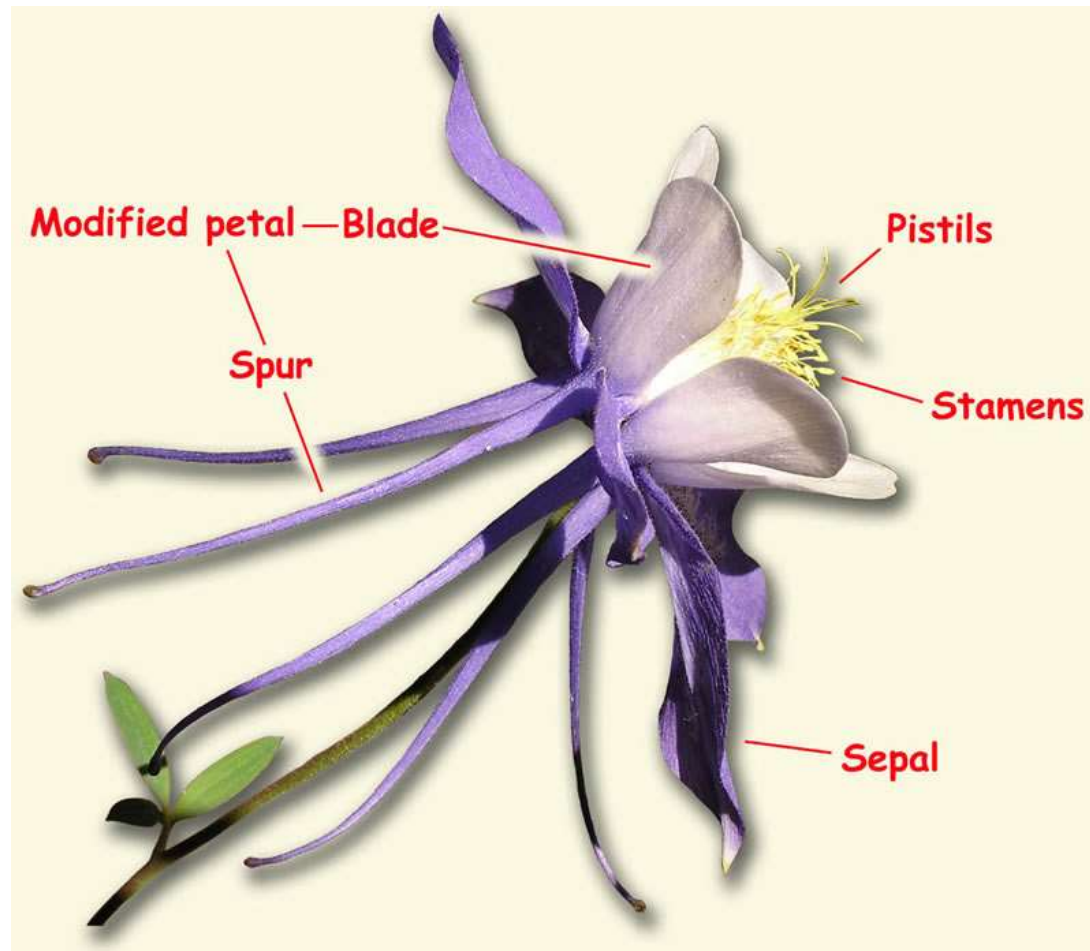
■ UC Master Gardener Program

# HOW MANY FLOWERS DO YOU SEE?

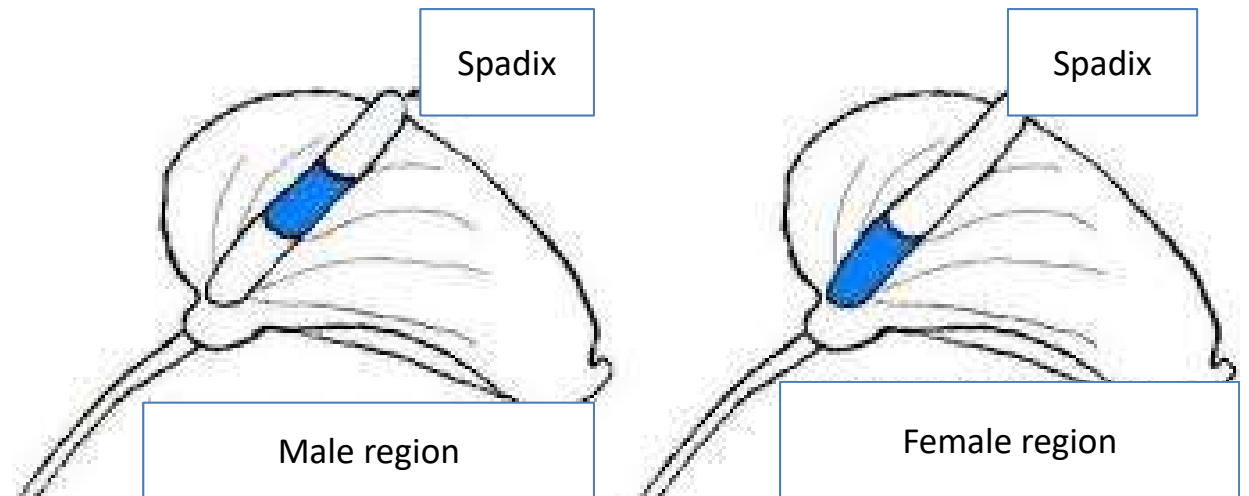




# SPUR ON COLUMBINE FLOWER



# SPADIX FLOWER



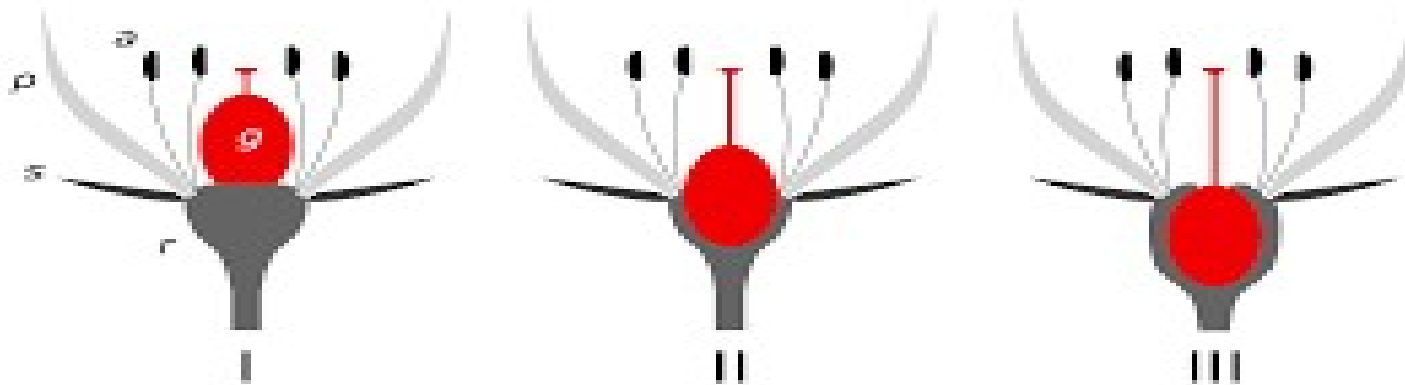


# SPADIX FLOWER. Anthurium



# THE OVARY AND OVULES

Is your ovary placed superior, central or inferior?



# PETALS TO PISTILS

## Flower Dissection Lab

How many plant parts can you identify?

How many petals/sepals/tepals are in your flower?

Perfect, Male or female flower/plant?

Where is the ovary? Are there seeds?

What color is the pollen?



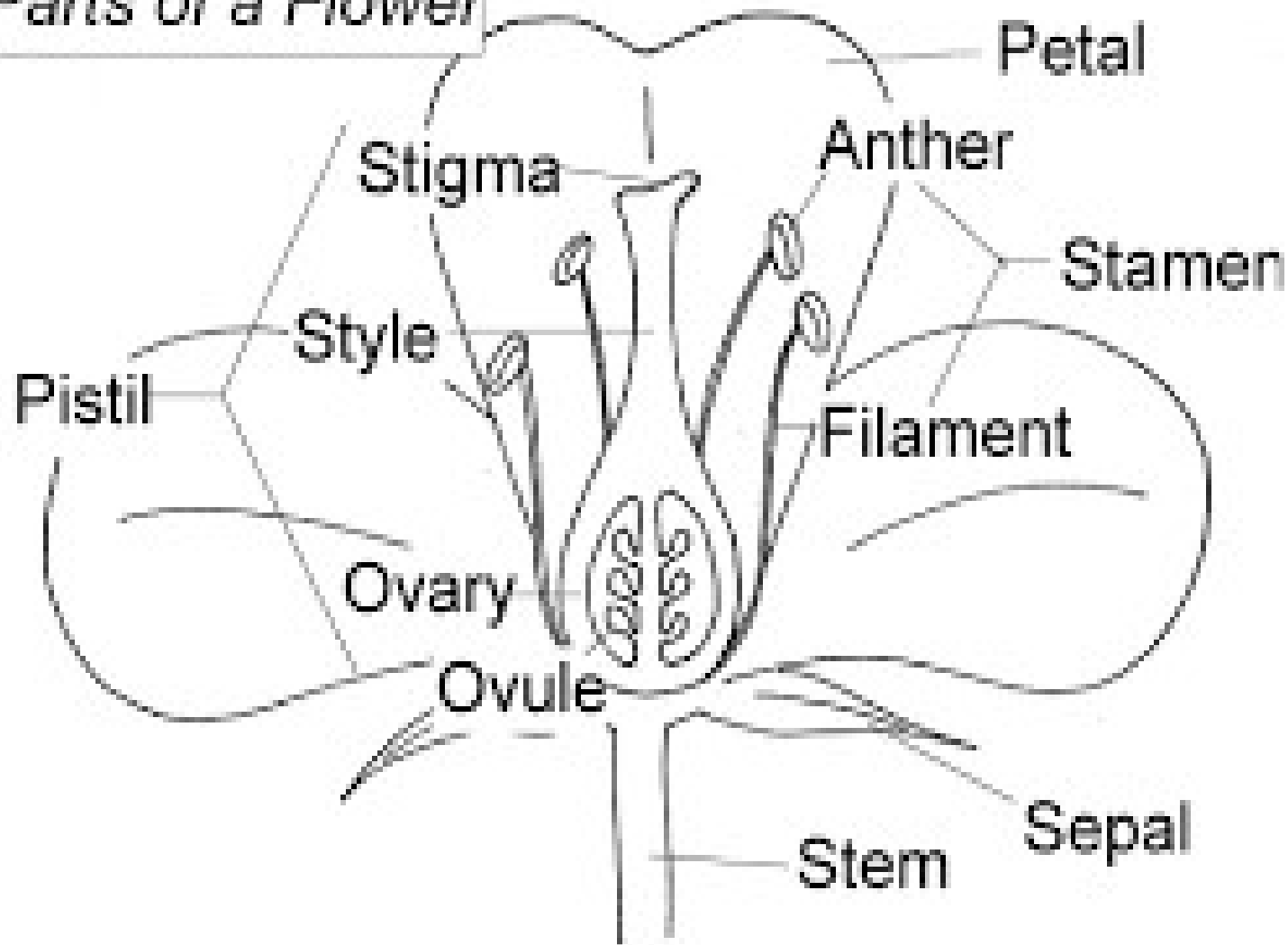
# SUPPLIES

- Lab Worksheet
- Razor blade...don't cut yourself
- NOW GO HAVE FUN





## *Parts of a Flower*

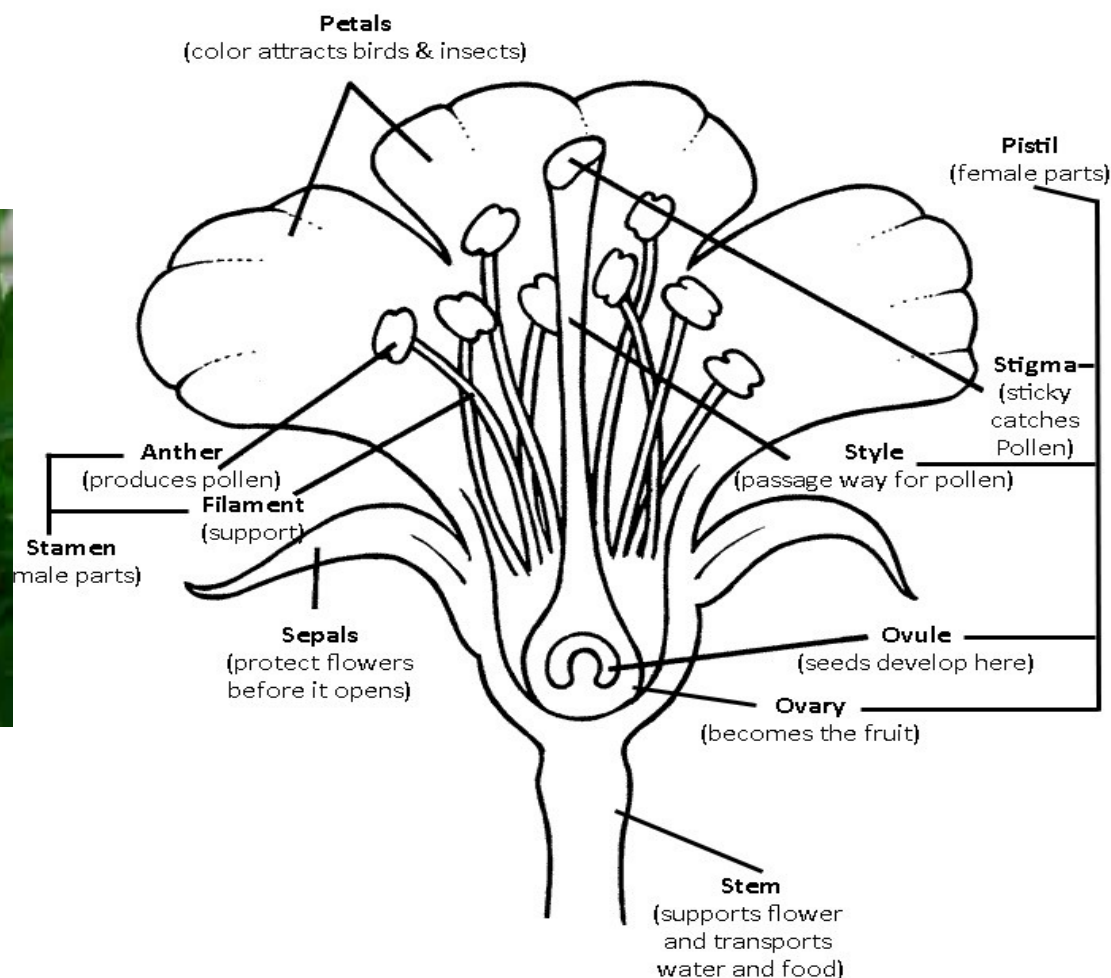


# ALSTROEMERIA

- Look at your specimen...What do you see?
- How many flowers?
- How many leaves?
- What shape are the leaves?
- What do the leaf edges look like?
- What type of venation does the leaf have?



# ALSTROEMERIA ANATOMY

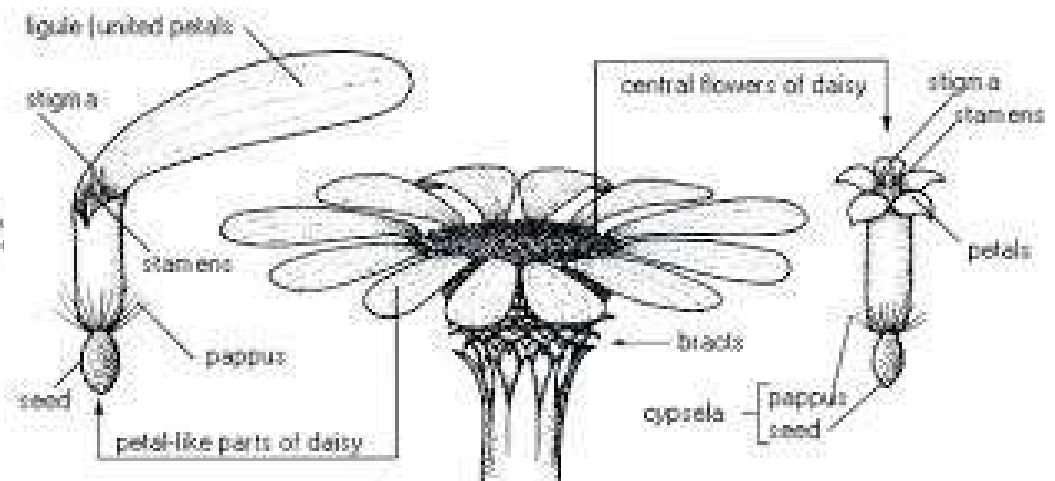
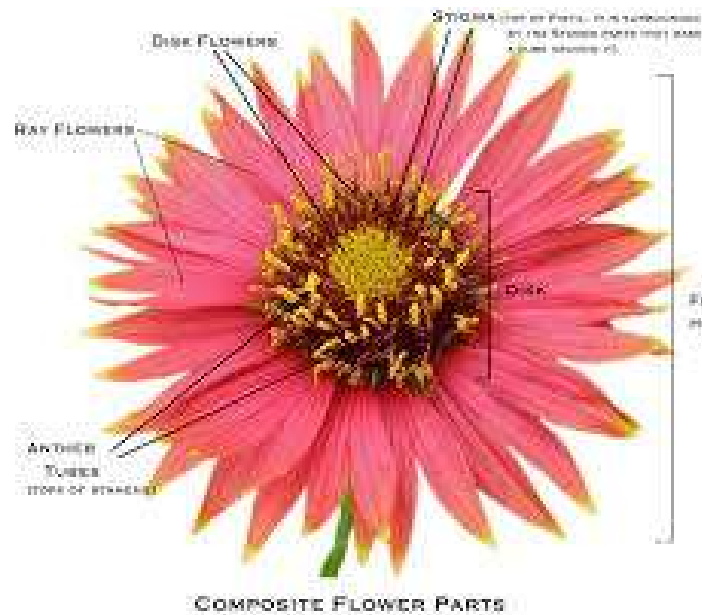


# COMPOSITAE

- Look at your specimen...What do you see?
- How many flowers?
- How many leaves?
- What shape are the leaves?
- What do the leaf edges look like?
- What type of venation does the leaf have?



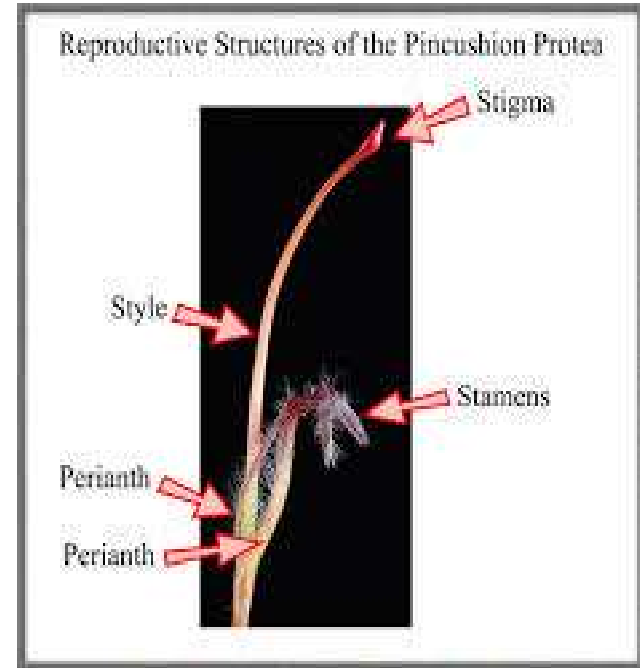
# COMPOSITE FLOWER ANATOMY



A daisy flower (Asteraceae) — a composite head of many small flowers



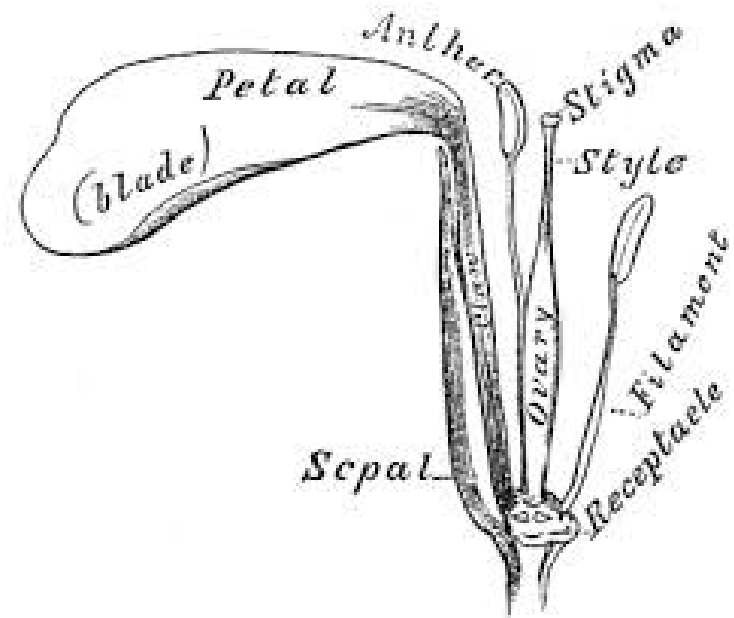
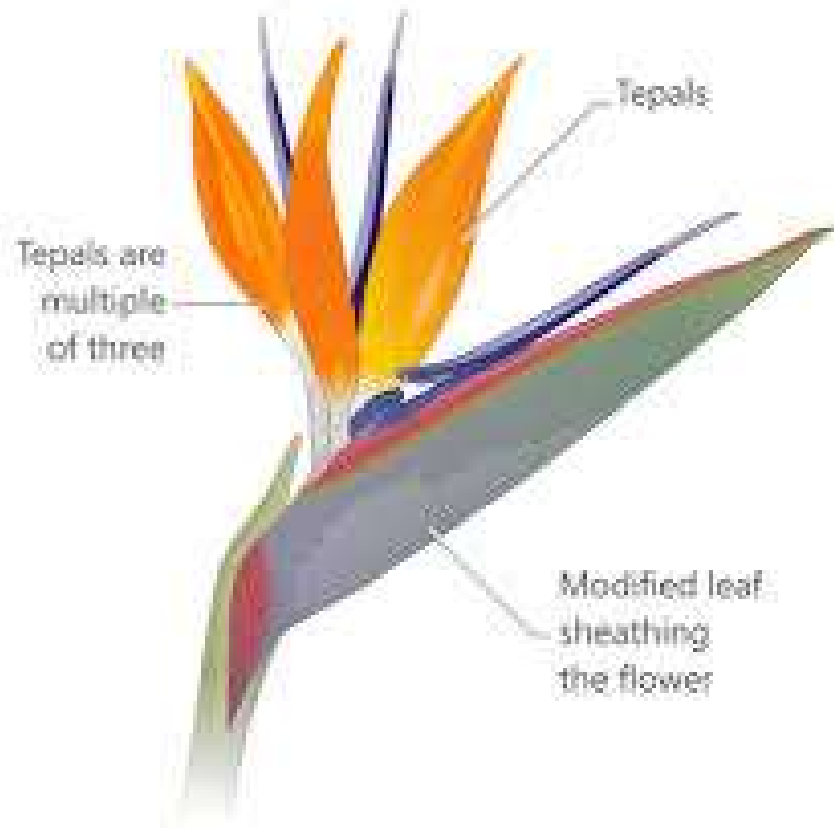
# Leucospermum flower anatomy



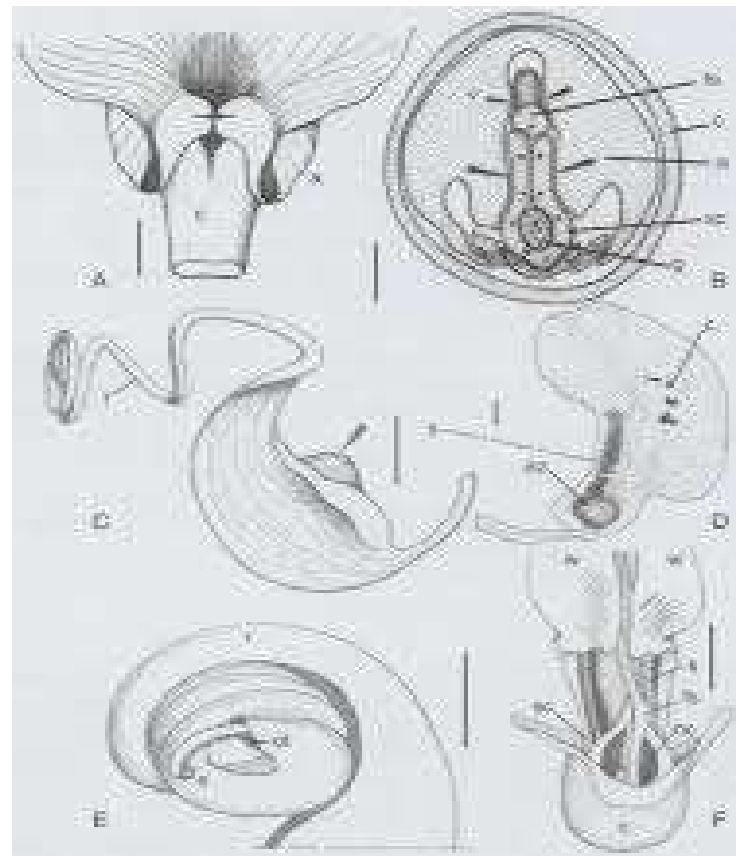


# Strelitzia reginae Flower Anatomy

Strelitzia

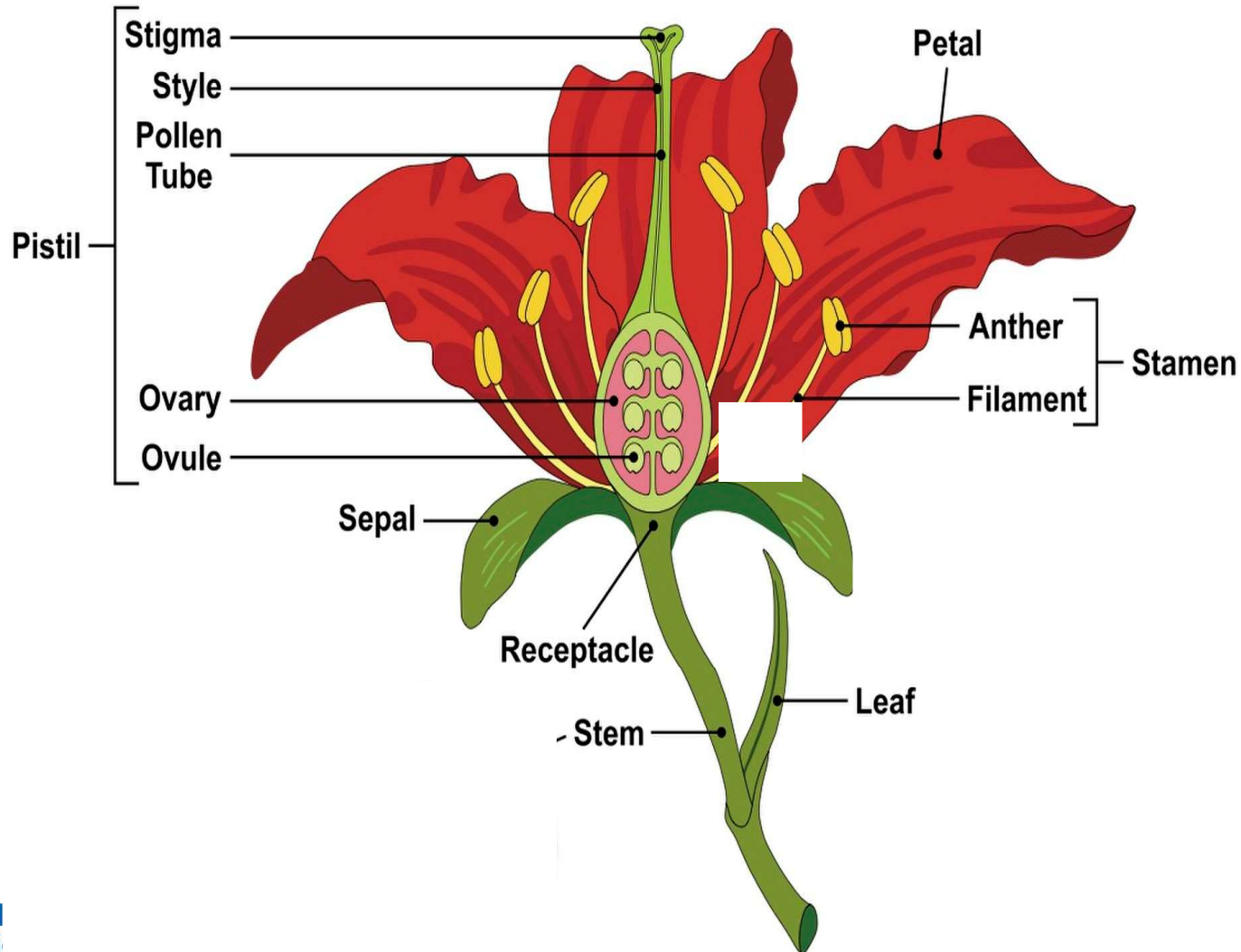


# VIGNA CARACALLA FLOWER ANATOMY



# PETALS TO PISTILS

## Flower Parts Quiz





# STRONGYLODON macrobotrys

## Jade Vine





# HIBISCUS SCHIZPETALUS

## Fringed Hibiscus



# KALANCHOE

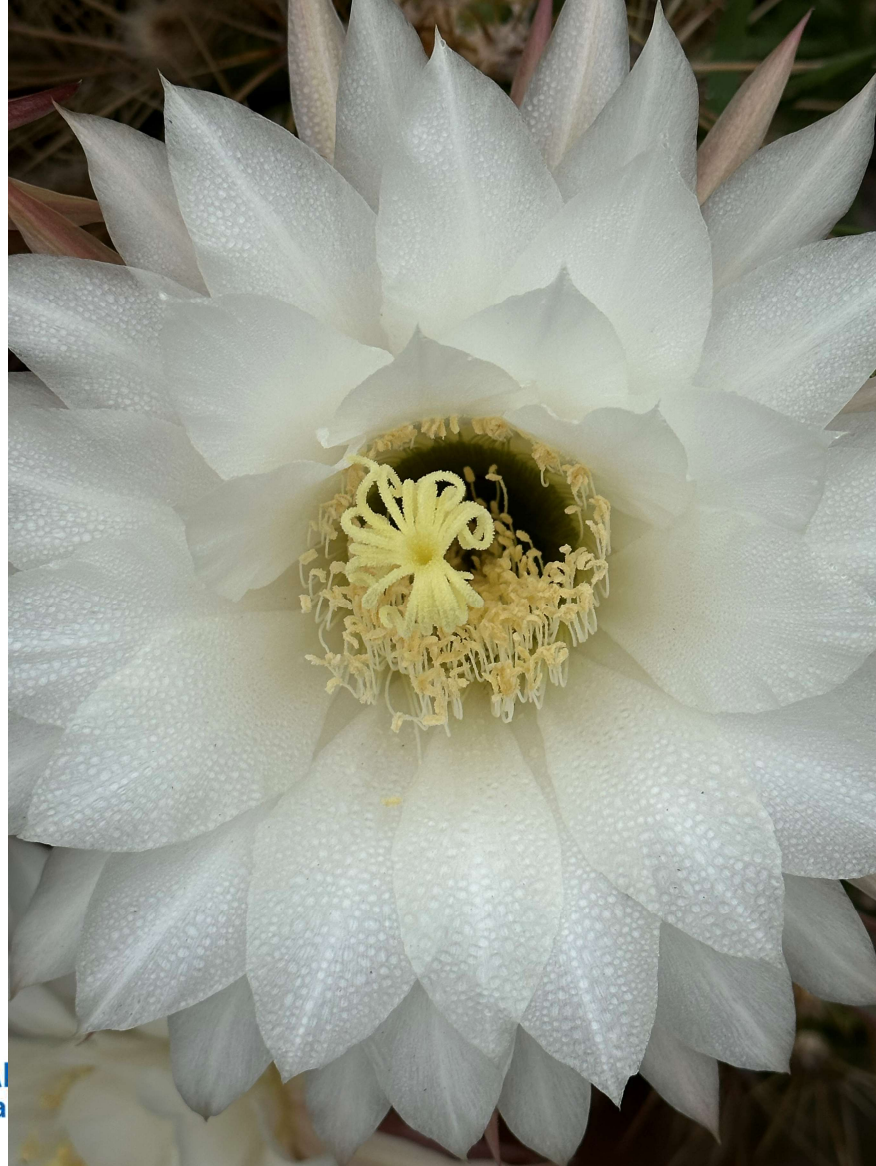




# CRINUM



# ECHINOPSIS



UNIVERSITY OF CALIFORNIA  
Agriculture and Natural Resources



# I DON'T KNOW



UNIVERSITY OF CAPE TOWN  
Agriculture and Natural Resources

# ORCHIS italica

## NAKED MAN ORCHID

