



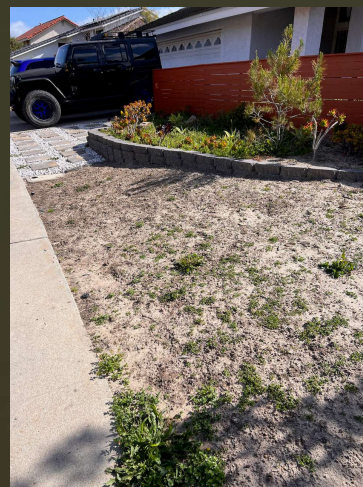
For San Diego County Master Gardeners

May 2, 2023

# Turf Establishment, Removal and Alternatives

1

## Turf Establishment or Renovation



2

## Prepare the Site

- Eliminate Weeds totally with a non-selective herbicide like glyphosate.
- Apply herbicide when unwanted plants are actively growing
- Install irrigation and drainage
- Grade the surface to drain away from structures
- Add topsoil if necessary and allow it to settle
- Add a starter fertilizer –lightly rake it in
- Create a smooth surface

3

## Seed versus Sod

### Seed

- Less expensive
- Takes longer
- Needs more watering to establish
- Downpour can wipe out your efforts

### Sod

- More expensive
- Instant effect
- Water required but may be as intense
- Must be installed within 24 hours- very perishable

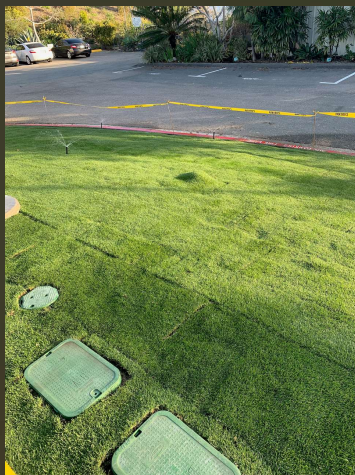
4

## Available at local Garden Centers



5

## Turf Install Project at MiraCosta



6

Installation with Subsurface Drip Irrigation

7

Time for a Change?



8



News for Immediate Release\_\_

## Metropolitan Board Calls for Banning Non-Functional Turf on Commercial, Industrial, Public Properties

Oct. 17, 2022

*Board supports permanent ban of grass that is not regularly used for recreation, other purposes*



9

"More than half of all water used in Southern California is used outdoors for irrigation, much of it for grass that is not walked or played on or used in any meaningful way. Sustaining ornamental grass is not a good use of our precious water resources," Metropolitan General Manager Adel Hagekhalil said.

"We are experiencing unprecedented drought conditions in California and on the Colorado River – straining both of our imported water supplies. And the reality of climate change means that these alarming conditions are likely to become more common and more severe. We need to find ways to permanently live with less water," she added.

10

## Lawn Conversion to a WaterSmart Landscape

- Rebates and Requirements to remove existing turf
- Available from Metropolitan Water District, Local Water Agencies
- Does not include synthetic turf
- All hardscape must be permeable
- Bare dirt does not qualify
- Must include a storm water retention feature

11

## Local Neighborhood Conversion of Narrow Strips



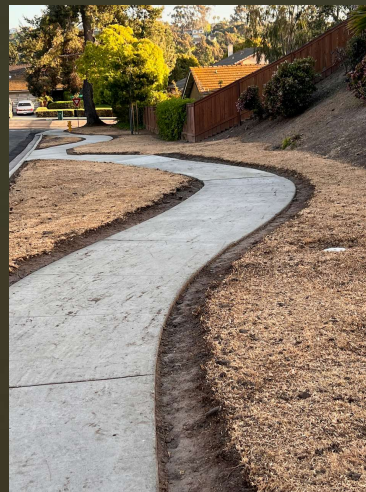
12

## Noticed Yellow Turf From Herbicide Application



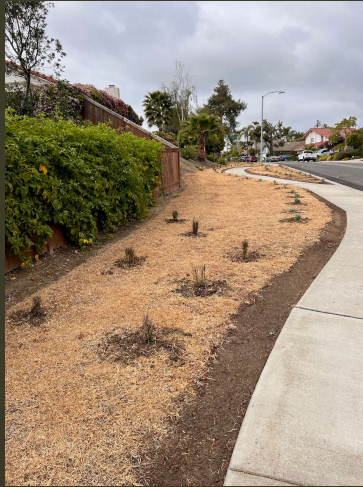
13

## After a few weeks all was brown and then edged-excess hauled away



14

- 1 Gallon plants were plated right through the old turf



15

- An organic mulch was added



16



## Sheet Mulching Video

- [Bay Friendly Sheet Mulching Video](#)

17

## How much lawn do you need?



18

A good start..



19

No turf, mounded berm, boulders,  
permeable pavers, rock mulch



20

## Gravel but few plants



21

## Low Water and colorful



22



## Different themes: desert to tropical



23

More ideas  
**Turf Alternatives**

24



## Artificial Turf



25

## Has it uses...



- For high traffic areas that need to look good
- Can be used right after a rain event
- Renovating this lawn every year would put it out of commission for months at a time

26

...And it has it weeds



27

*Kurapia nodiflora*



28

✓ Kurapia established from plugs- \$1.89 per sq ft. if 15" centers



29

✓ Kurapia from sod-



30



## *Dymondia margaretae*



31

## *Myoporum parvifolium*



32



## *Ruschia lineolata*



33

## Ruschia



34

## ■ The Water Conservation Garden in Rancho San Diego



35

## ■ Thoughtful Exhibits and Inspiration



36