



PITTOSPORUM

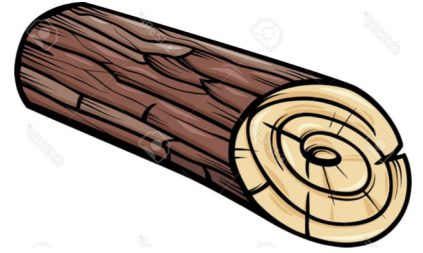
Marina Madrid Lopez •

Family: *Pittosporaceae*

Genus of ~200 species

Evergreen trees and shrubs

Also known as:



Cheesewood!

Native to: Australia, South Africa,
East & South Asia, New Zealand and
the Pacific Islands.

Growth: 2 – 30 meters tall

Usually found in forests, can be
moderately drought tolerant

Leaves: whorled, simple & entire

Flowers: can be single or in umbels,
with 5 petals and often sweetly
scented.

Fruit: woody capsule with sticky
seeds.



Pittosporum resiniferum

Petroleum nut





Pittosporum tobira

Mock Orange

Japanese Cheesewood

Australian Laurel



Pittosporum eugenii

Lemonwood

Tarata



Pittosporum viridulatum

Pests and Problems



Why *Pittosporum*?



