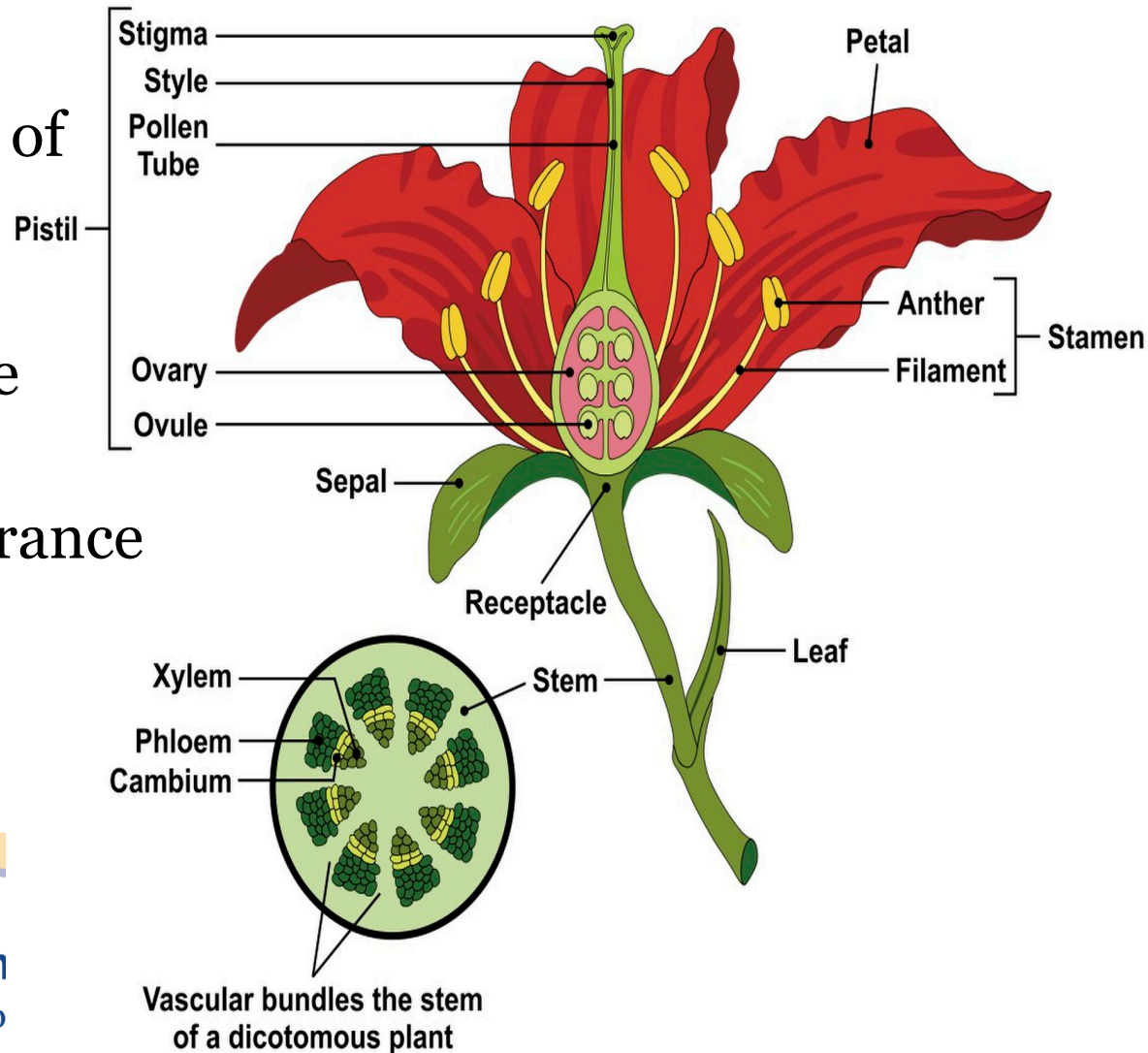


PETALS TO PISTILS

Flower Dissection Lab

- PURPOSE:
- Study the structure of various flowers
- Identify male and female reproductive organs
- Describe the appearance of flower parts



Botanical vocabulary terms

- Anther
- Bract
- Calyx
- Complete flower
- Corolla
- Determinate
- Dioecious
- Filament
- Head
- Imperfect flower
- Incomplete flower
- Indeterminate
- Inflorescence
- Monoecious
- Ovary
- Perfect flower
- Petals
- Pistil
- Pistillate
- Pollen
- Sepals
- Spadix
- Stamen
- Stigma
- Style
- Tepals
- Venation



University of California

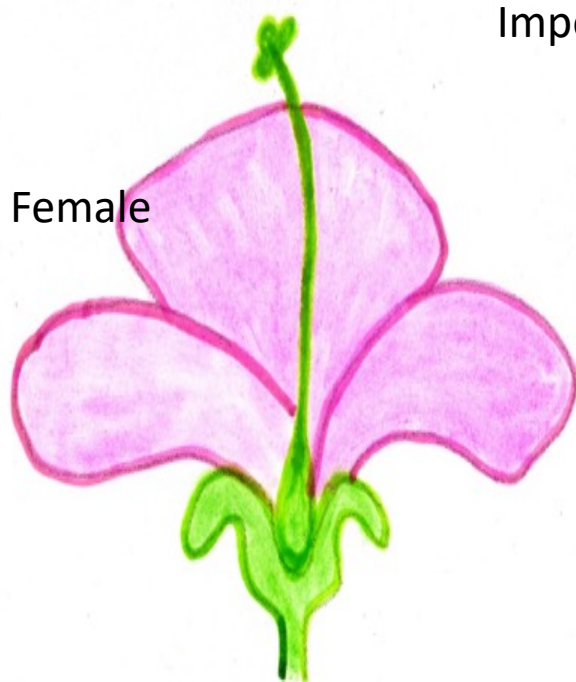
Agriculture and Natural Resources

■ UCCE Master Gardener Program

PETALS TO PISTILS

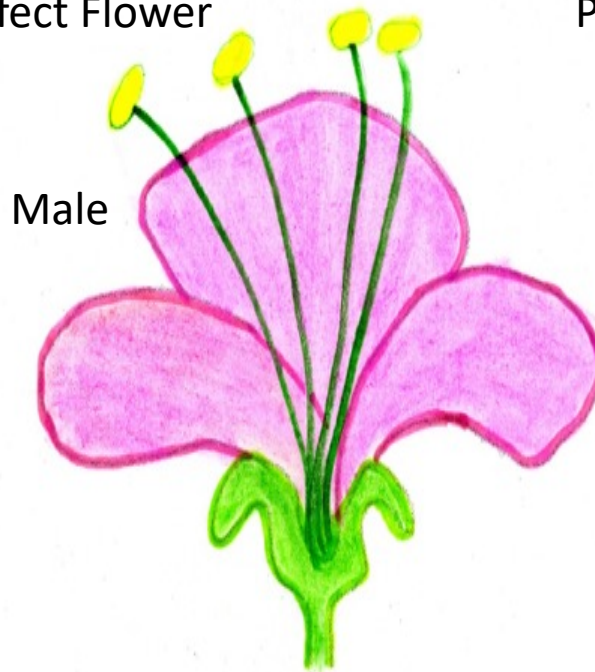
Flower Dissection Lab

Is your flower perfect or imperfect?



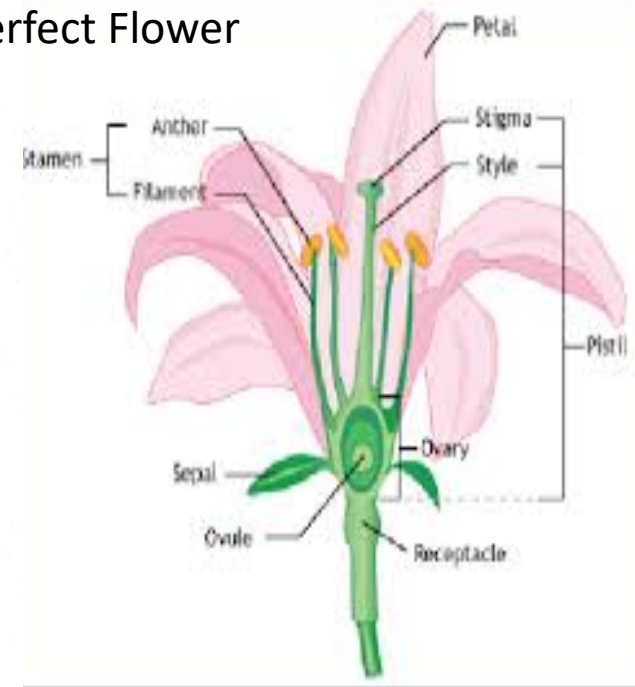
Female

Imperfect Flower



Male

Perfect Flower



University of California

Agriculture and Natural Resources

UCCE Master Gardener Program

PETALS TO PISTILS

Flower Dissection Lab

Is your plant monoecious or dioecious?



Male plant



Female plant

Dioecious



**Bisexual/
hermaphrodite**



Monoecious

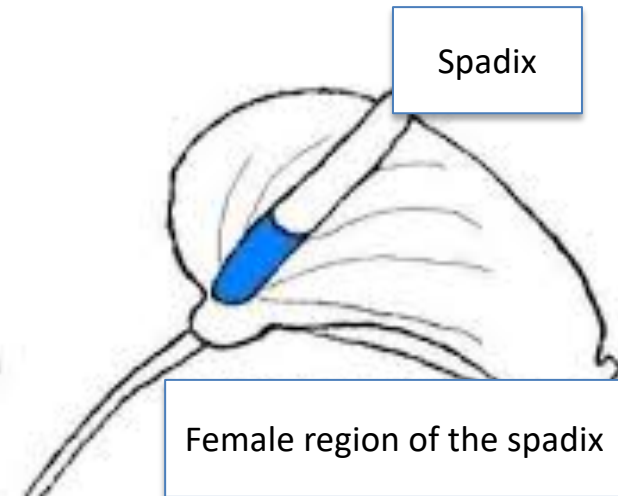
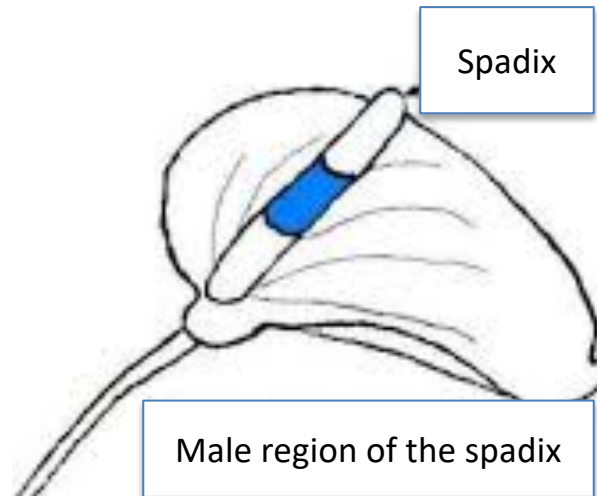


University of California

Agriculture and Natural Resources

■ UCCE Master Gardener Program

SPADIX FLOWER



University of California

Agriculture and Natural Resources

■ UCCE Master Gardener Program

HOW MANY FLOWERS DO YOU SEE?



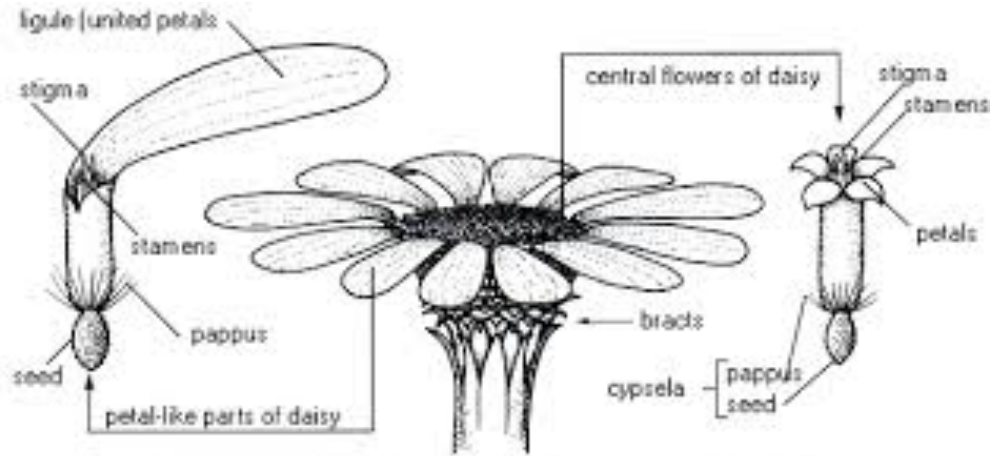
University of California

Agriculture and Natural Resources

■ UCCE Master Gardener Program

HOW MANY FLOWERS DO YOU SEE?

Trick Question



A daisy flower (Asteraceae) — a composite head of many small flowers



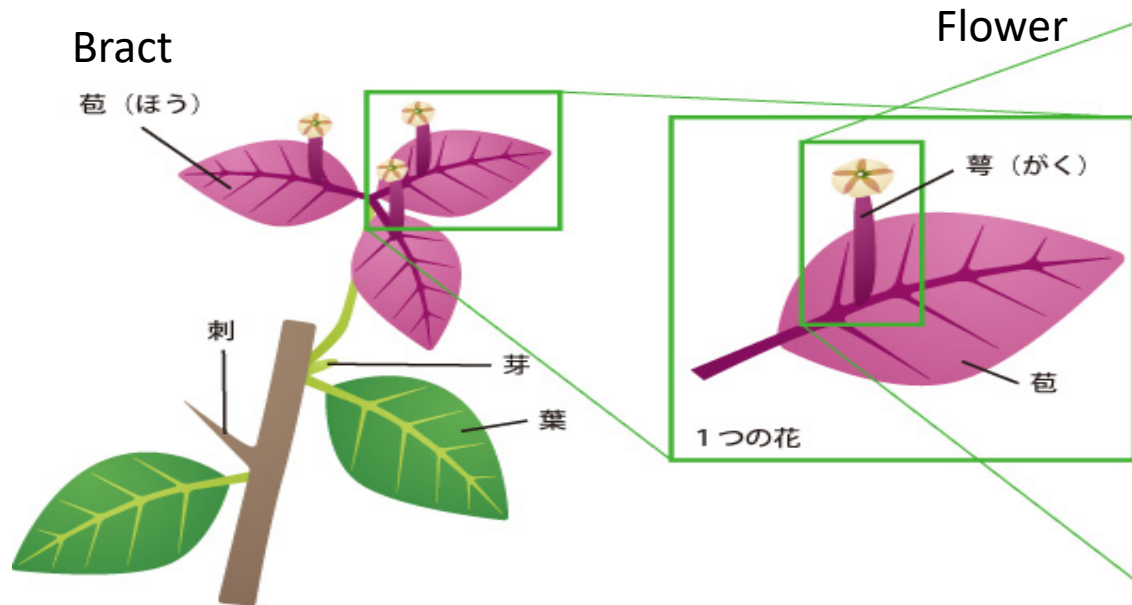
University of California

Agriculture and Natural Resources

UCCE Master Gardener Program

HOW MANY FLOWERS DO YOU SEE?

Another Trick Question



University of California

Agriculture and Natural Resources

UCCE Master Gardener Program

PETALS TO PISTILS

Attracting Pollinators

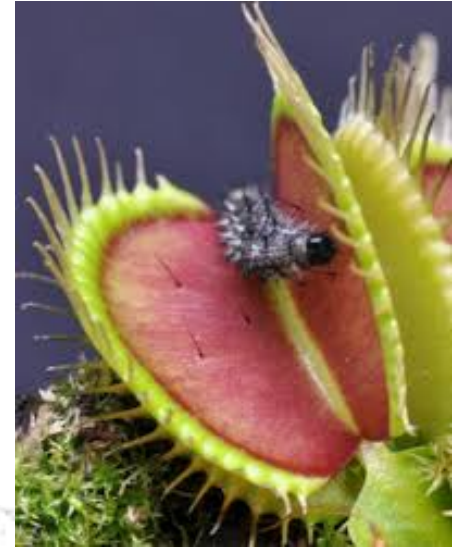


University of California

Agriculture and Natural Resources

■ UCCE Master Gardener Program

Carnivorous Plants



University of California

Agriculture and Natural Resources

■ UCCE Master Gardener Program

Petals to Pistils

- Look at your specimen...What do you see?
- How many flowers?
- How many leaves?
- What shape are the leaves?
- What do the leaf edges look like?
- What type of venation does the leaf have?



University of California

Agriculture and Natural Resources

■ UCCE Master Gardener Program

PETALS TO PISTILS

Flower Dissection Lab

How many petals/sepals/tepals are in your flower?



University of California

Agriculture and Natural Resources

■ UCCE Master Gardener Program

PETALS TO PISTILS

Flower Dissection Lab

Is you ovary placed superior, central or inferior?



University of California

Agriculture and Natural Resources

■ UCCE Master Gardener Program

PETALS TO PISTILS

Flower Dissection Lab

How many parts can you identify in your flower?

How many flowers are in your sample?

Think composite flower



University of California

Agriculture and Natural Resources

■ UCCE Master Gardener Program

SUPPLIES

- Lab Worksheet
- Razor blade...don't cut yourself
- Tape for mounting flower parts
- NOW GO HAVE FUN

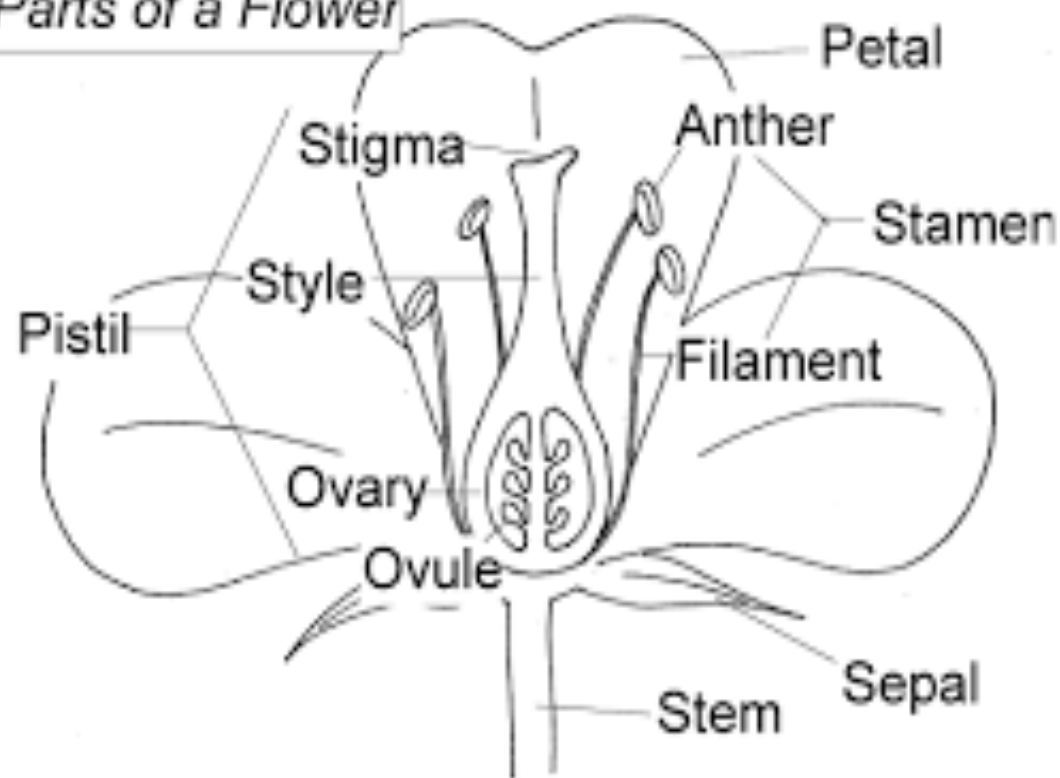


University of California

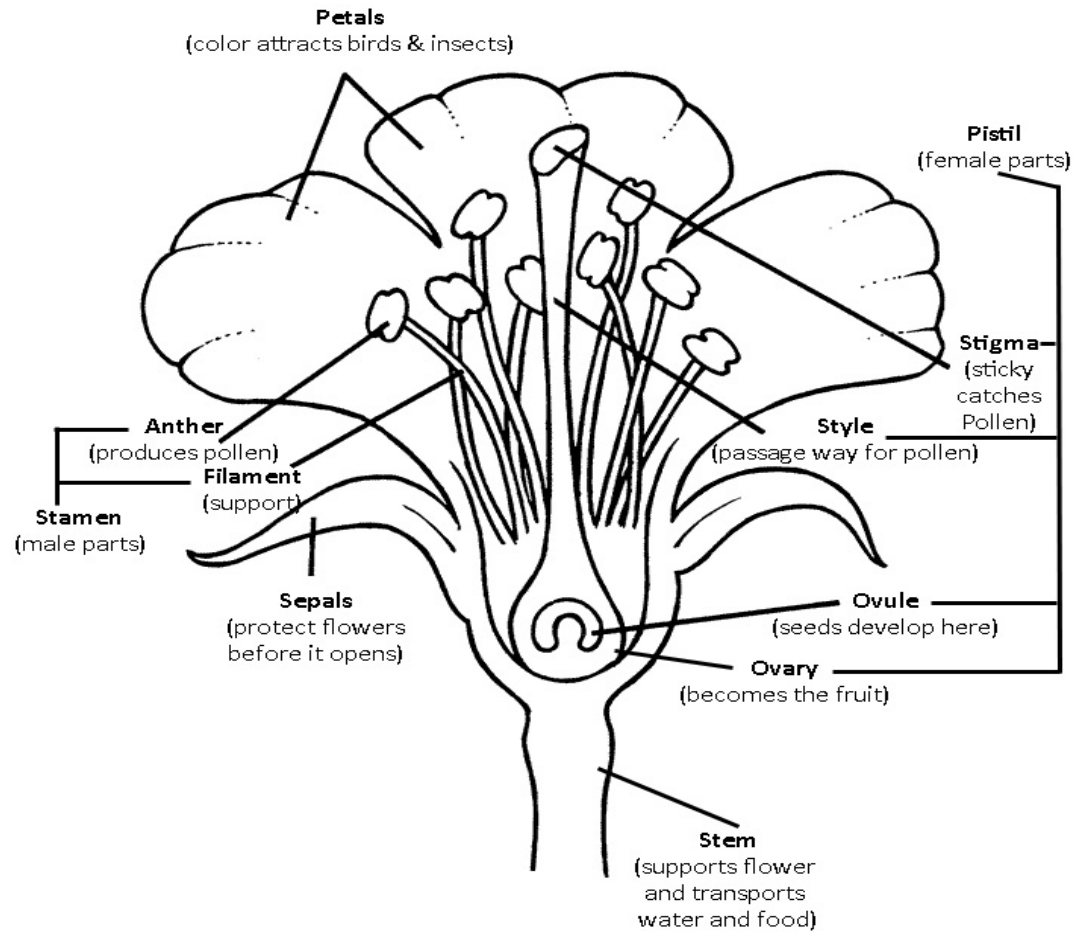
Agriculture and Natural Resources

■ UCCE Master Gardener Program

Parts of a Flower



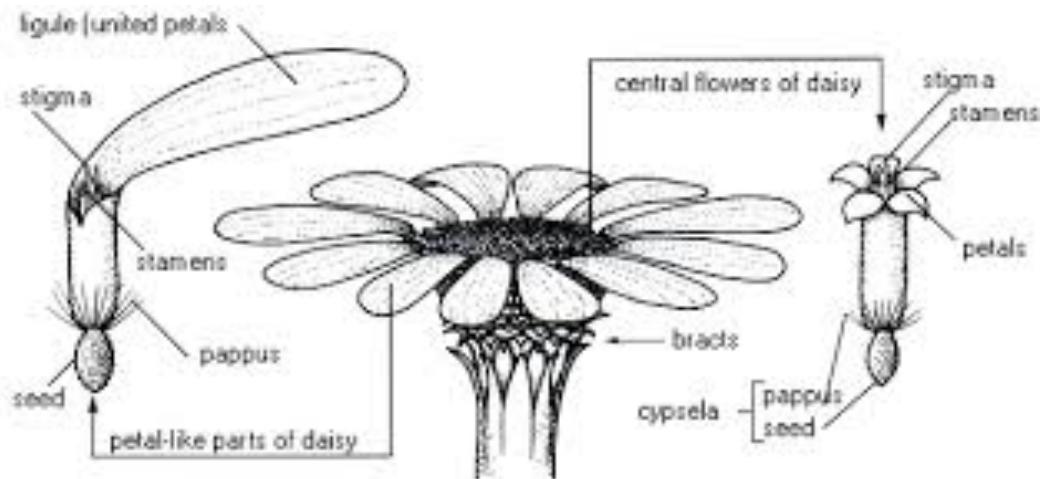
ALSTROEMERIA ANATOMY



COMPOSITE FLOWER ANATOMY

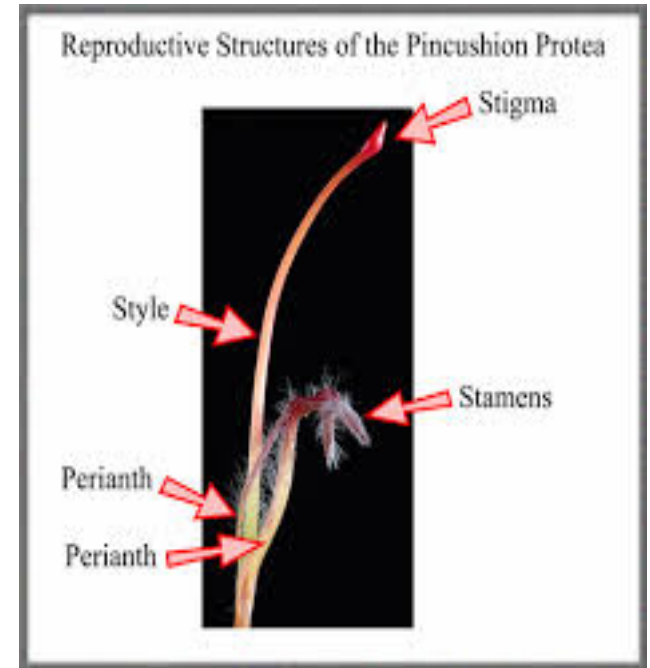


COMPOSITE FLOWER PARTS



A daisy flower (Asteraceae) — a composite head of many small flowers

Leucospermum flower anatomy



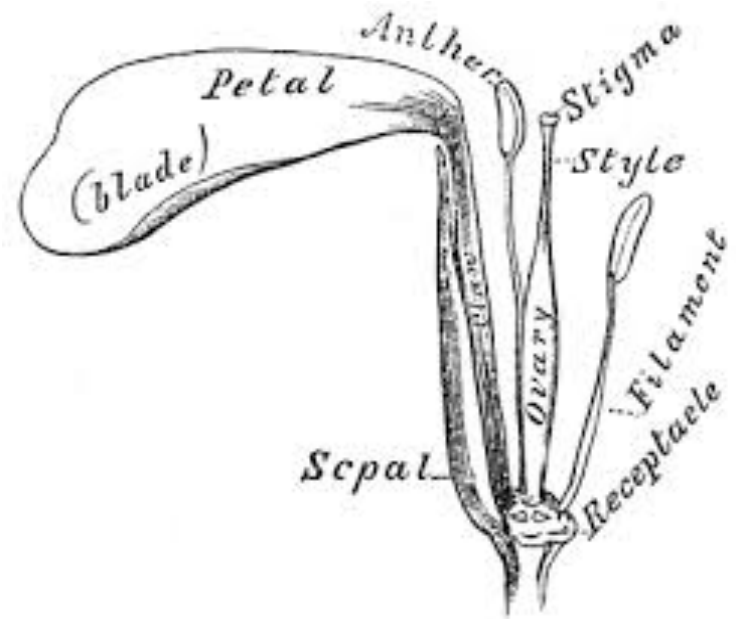
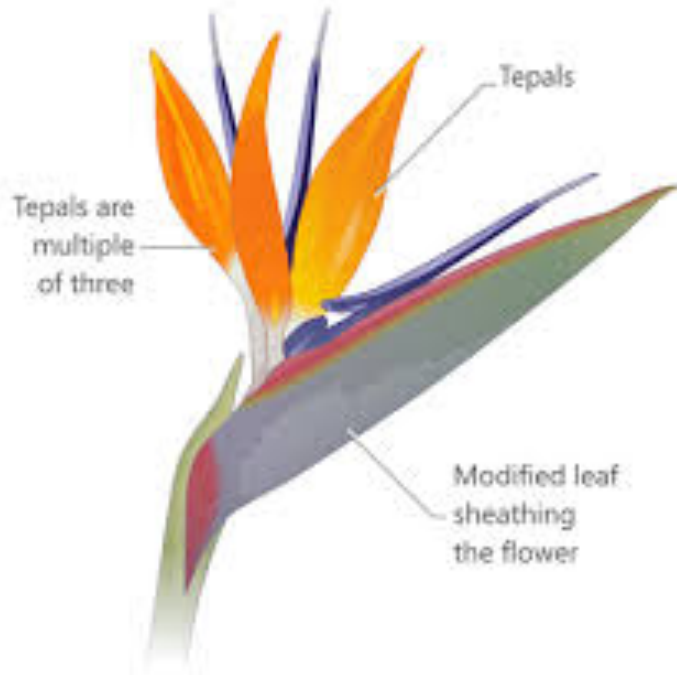
University of California

Agriculture and Natural Resources

■ UCCE Master Gardener Program

Strelitzia reginae Anatomy

Strelitzia

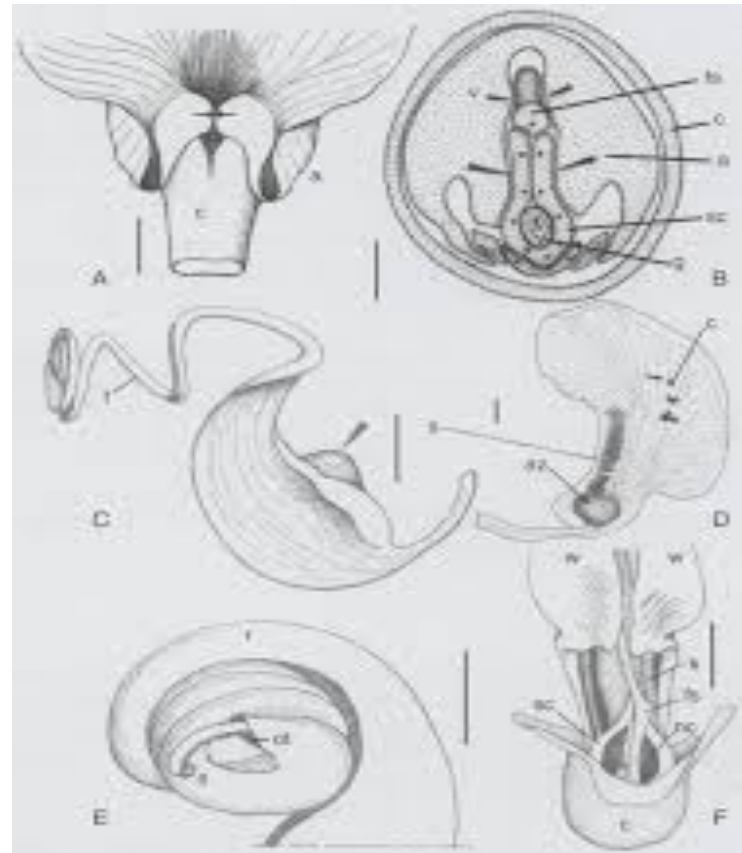


University of California

Agriculture and Natural Resources

UCCE Master Gardener Program

VIGNA CARACALLA FLOWER ANATOMY



PETALS TO PISTILS

Flower Parts Quiz

