

# Eucalyptus and Corymbia

By: Deanna Chandra

MG Trainee 2018

# Eucalyptus

- Eucalyptus is a genus of flowering trees and shrubs within the myrtle family, Myrtaceae. Eucalyptus is a native of Australia.
- There are more than 700 species of Eucalyptus in Australia and over 200 species have been tried in cultivation in California.



# Foliage



Mature leaves are lanceolate, petiolate and alternate.  
They are waxy or glossy green

Juvenile leaves are opposite  
and sessile and covered  
with a bluish-white powder



# Blossoms





# Bark



# History

- A native of Australia, the Eucalyptus was looked to with great promise for San Diego as a pest-free tree that would grow quickly and provide high quality lumber in our drought prone environment.
- Thousands of seedlings were planted by land-owners with the hope a great profit would be realized from the sale of wood, most specifically, to be used as railroad ties.
- To their dismay, the wood was harvested and found to be unsuitable for use. Because San Diego lacked native pests the trees grew much faster here than in Australia that resulted in twisted wood that was dry and brittle.

# History

## A note on Corymbia

- Up until the mid-1990s Corymbia (a genus of about 113 species) was classified as a Eucalyptus. However, with the use of molecular, and later DNA testing, Corymbia was reclassified into a separate genus. However, many naturalists have not recognized this reclassification and still consider the Corymbia a species within the Eucalyptus genus.

# Pests

- In recent years these prolific trees have been heavily damaged by the inadvertent importation of the Eucalyptus Longhorn Beetle in 1984 and the Red Gum Lerb Psyllid in 1998.

# Eucalyptus Longhorned Borer





# Red Gum Lerb Psyllid





# Common Eucalyptus of San Diego

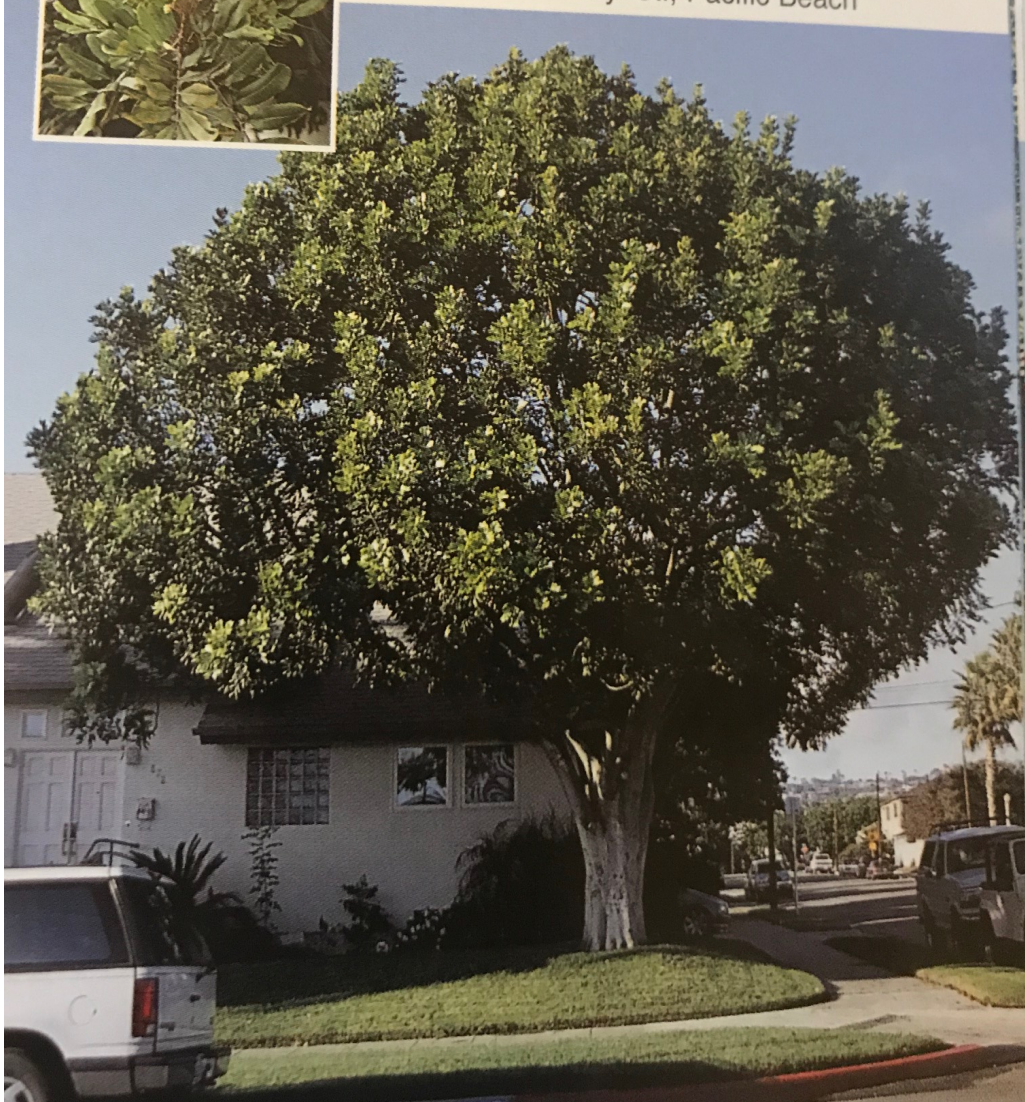
Flowering Red Gum  
*Corymbia ficifolia*



5 Marcheta St., Encinitas



878 Beryl St., Pacific Beach



Carrot Wood  
*Cupaniopsis anacardioides*



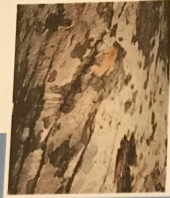


5835 Bellevue Ave., La Jolla

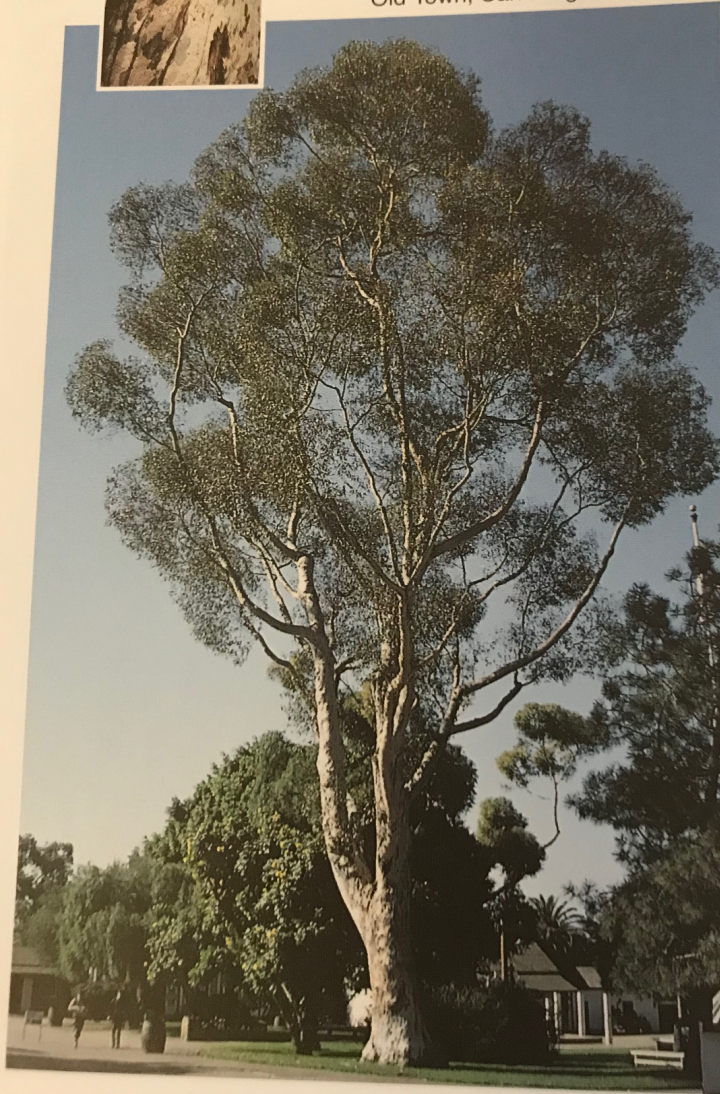




5835 Bellevue Ave., La Jolla

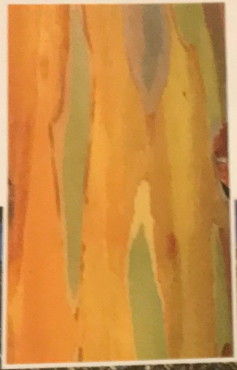
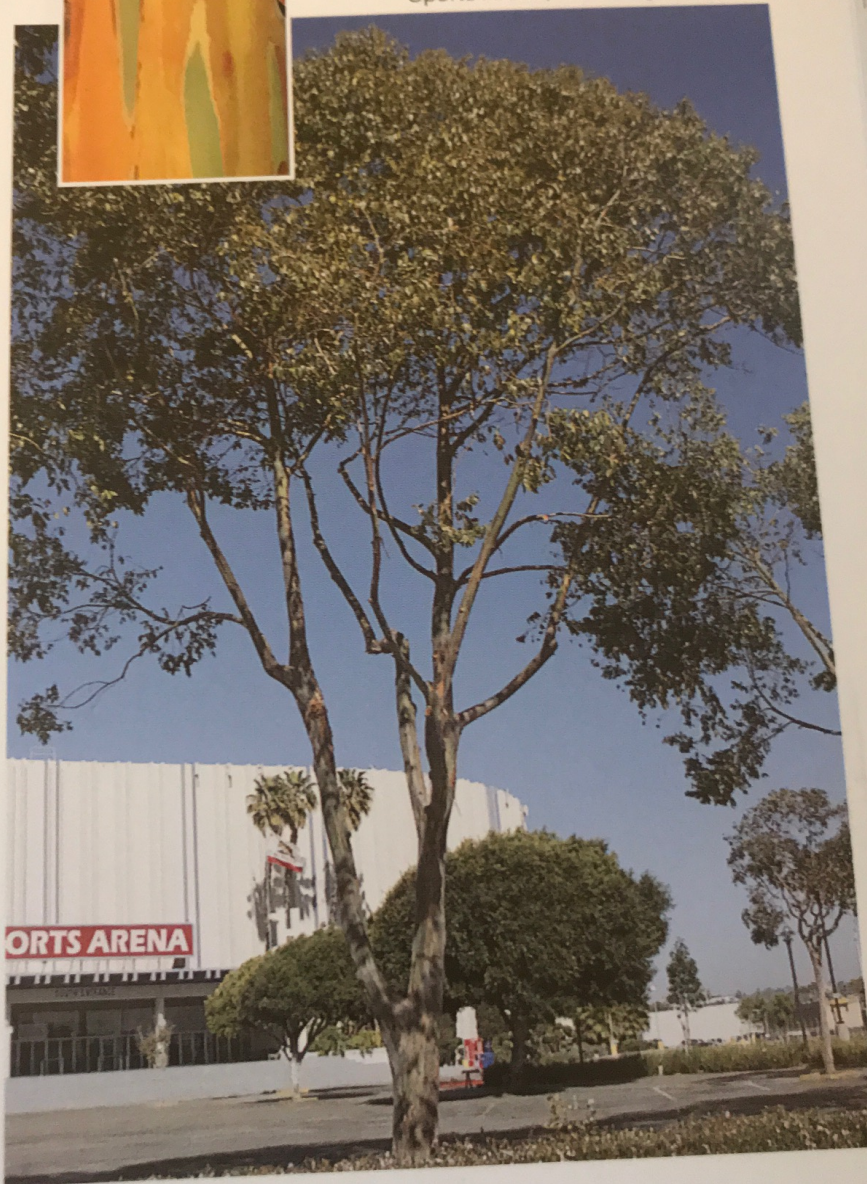


Old Town, San Diego



Sugar Gum  
*Eucalyptus cladocalyx*

Sports Arena, San Diego

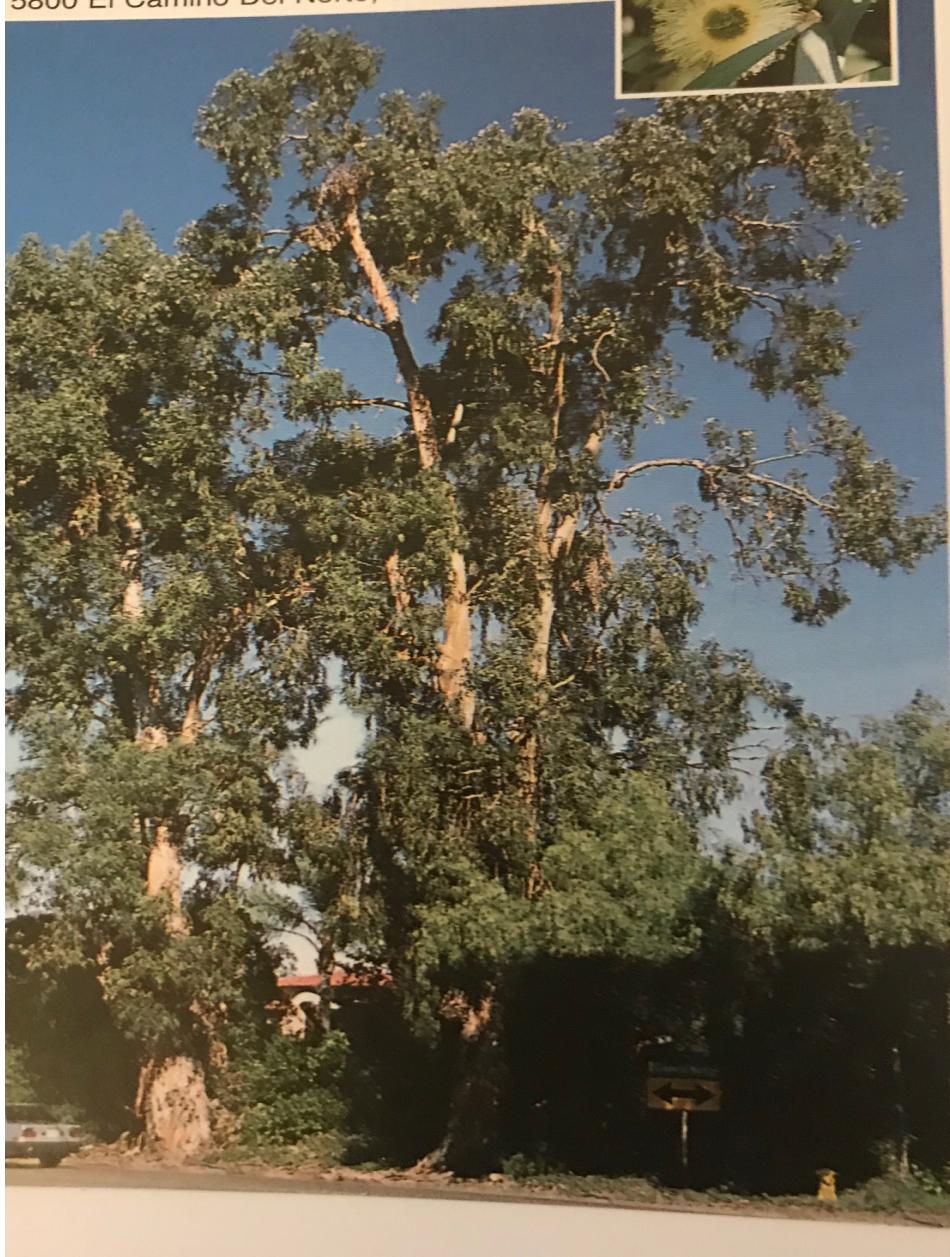


Rainbow Gum  
*Eucalyptus deglupta*





5800 El Camino Del Norte, San Diego

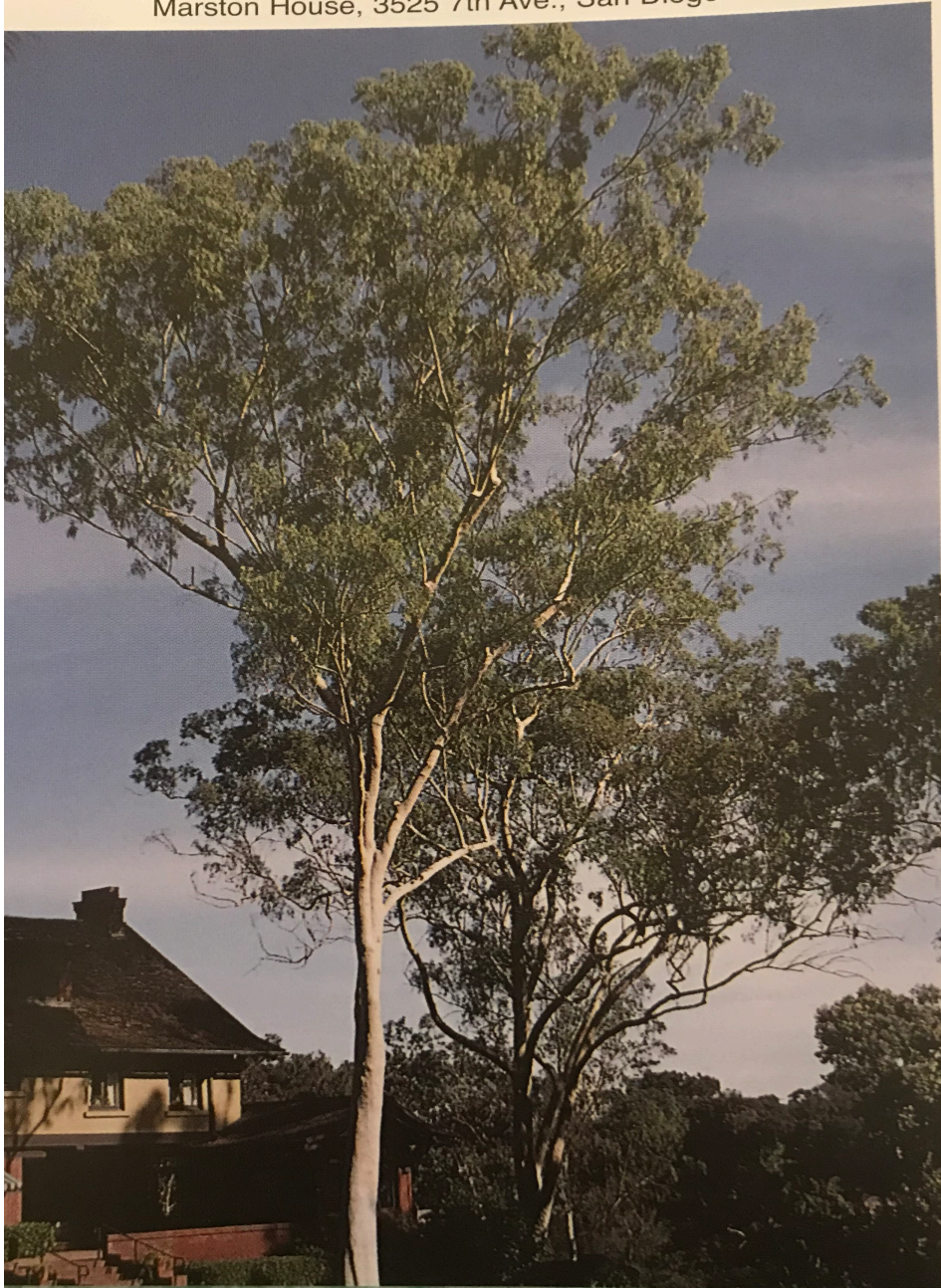


Blue Gum  
*Eucalyptus globulus*



Spreckels Park, Coronado

Marston House, 3525 7th Ave., San Diego



Lemon Scented Gum  
*Corymbia citrodora*

# References

- Bringman, Steve (2005) The San Diego Horticultural Society, *Ornamental Trees for Mediterranean Climates* the Trees of San Diego
- Sunset (2007) Western Garden Book
- <https://en.wikipedia.org/wiki/Eucalyptus>