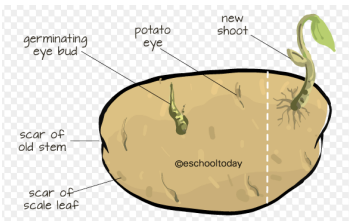


Definition Of Plant Parts

Stems

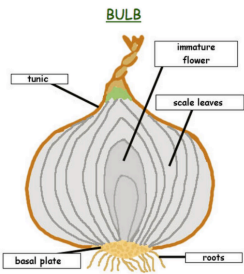
Tubers

Tubers are basically enlarged stem tissue and do not have a basal plate or tunic. They also come in a variety of shapes and may be flat or cylindrical. Tubers may also come in clusters; potatoes, begonias and dahlias.



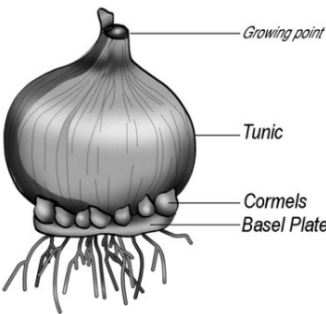
Bulbs

If you cut a bulb in half vertically, you can see the parts inside. The bottom or basal portion of the bulb cradles a tiny bud. It anchors the scales and the floral stock to the bulb and holds the plant's roots. A tunic, a thin outer skin, protects many true bulbs. I.E. onions, tulips, narcissus, and lilies are true bulbs.



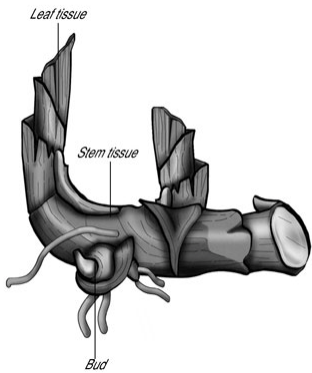
Corm

Short, thick, unbranched, underground stem often surrounded by dry (not fleshy) leaves or leaf bases



Rhizome

In seed plants, stem that is often elongate, generally more or less horizontal and underground; distinguished from roots by bearing of leaves, leaf scars, axillary buds, etc.



Stolon - Runner

Normally thin, elongate stem lying more or less flat on the ground and forming roots as well as erect stems or shoots (which become new, clonal plants) at generally widely spaced nodes; runner.

