

My Bloomin' Thing  
Helen Montag

**CUPRESSACEAE**

**The Cypress Family**

**cedars, cypress,  
& junipers**

Kingdom

**Plantae**

Division

**Coniferophyta**

Class

**Pinopsida**

Order

**Pinales**

**Families .....**



**Pinaceae**

**1**

pinos, firs,  
& spruces

**Araucariaceae**

**2**

oldest  
Conifers

**Cupressaceae**

**3**

cypress, junipers,  
many cedars

**Cephalotaxaceae**

**4**

plum,  
yew

**Podocarpaceae**

**5**

yellow  
wood

# CUPRESSACEAE

## Characteristics

- Conifers – bear cones
- Evergreens
- Gymnosperms – seeds are unprotected
- Leaves
- Bark
- Reproduction
- Pests and Disease
- Distribution
- Uses
- Notable Family Members



*Thuja occidentalis* (White Cedar)

# Leaves

needle-like, scale-like, arranged spirally or in 'whorls'



Tasman juniper  
*Diselma archeri*



Siberian cypress  
*Microbiota decussata*

# Bark

Leathery and deeply grooved



White Cedar  
*Thuja occidentalis*



Atlantic White Cedar  
*Chamaecyparis thyoides*



Rocky Mountain Juniper  
*Juniperus scopulorum*

# Cones

Female cones are small and leathery or woody, made up of small scales



White Cedar  
*Thuja occidentalis*

Junipers have berry-like cones (3 fleshy scales that give appearance of a 'berry')



Common Juniper  
*Juniper communis*

# MONOECIOUS - female and male cones on same plant

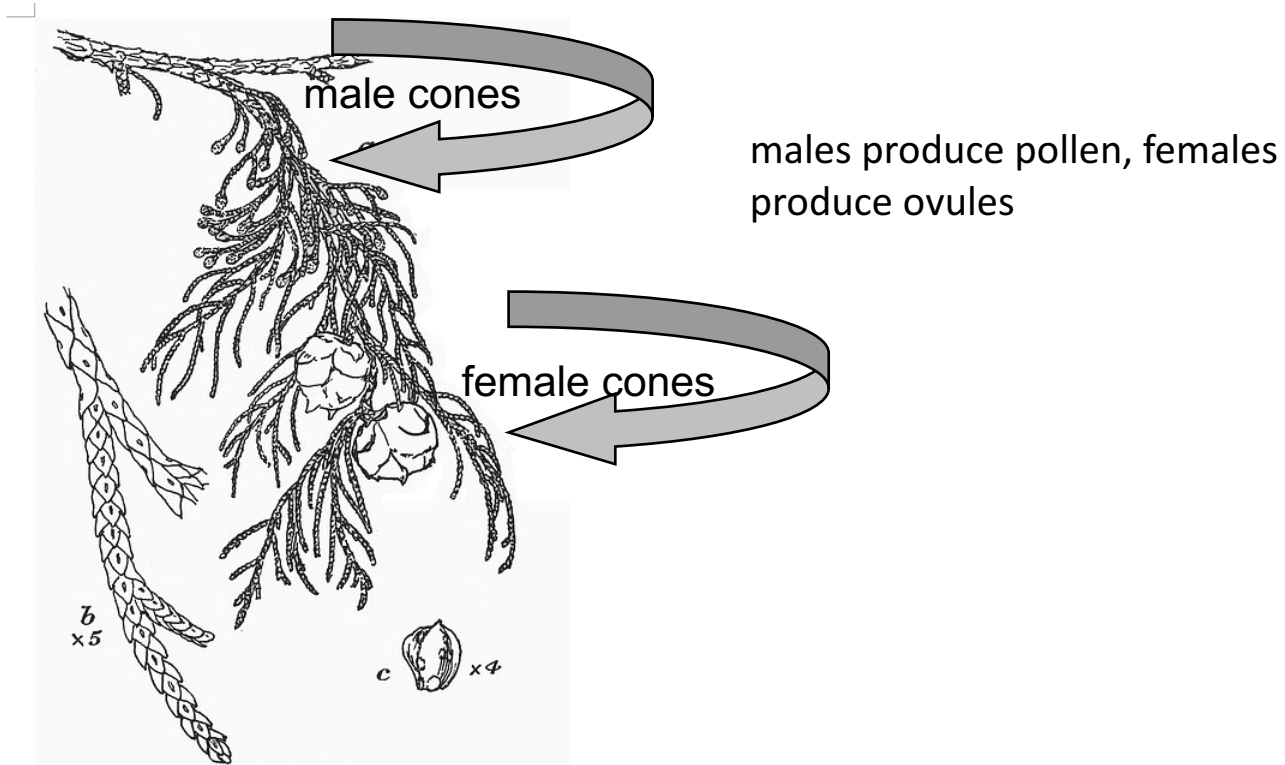


FIG. 49.—*CUPRESSUS TORULOSA*.

*a*, spray with two female and many male cones; *b*, branchlet; *c*, seed market with resin glands.

Himalayan Cypress  
*Cupressus torulosa*

# PESTS and DISEASES

cypress aphids and cankers (parasitic fungi)



Cypress aphids

***Cinara cupressivora***

natural enemy?

Parasitic wasp

***Pauesia juniperorum***



Canker

***Seiridium cardinale***



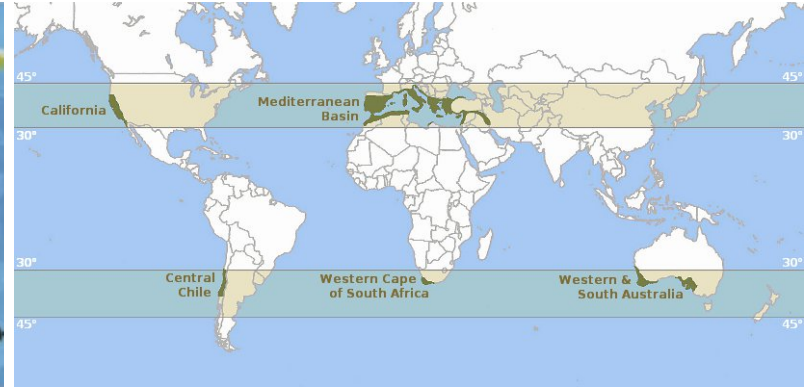
Bleeding from

***Seiridium cardinale***  
Mexican White Cedar  
***Cupressus lusitanica***



# Distribution

World-wide, from sea level to mountain peaks, every continent except Antarctica



# USES

Wood for construction



Landscaping... ornamental, living fences, windbreaks

*Juniperus communis* berries used to flavor gin



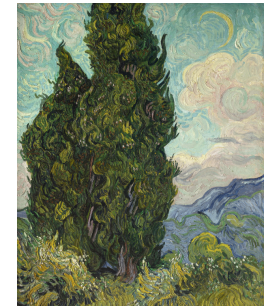
Aromatic oils found in men's fragrance



Native Americans burned leaves to produce purifying smoke



Cypress trees in many of Vincent Van Gogh's paintings





**Most massive...**

## **Giant Sequoia**

*Sequoiadendron giganteum*

(Cupressaceae)

'General Sherman'

**21 tons**

**Sequoia National Park,**

**California**



**Tallest...**

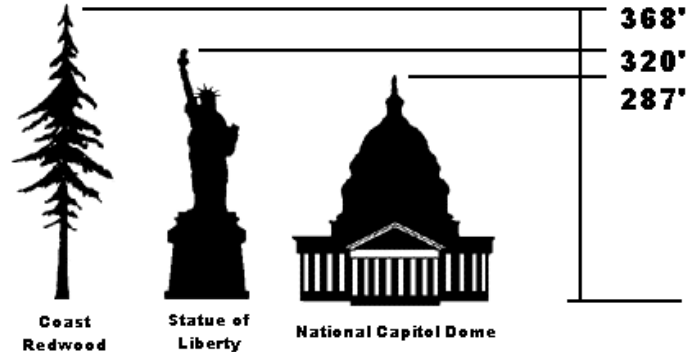
# **Coast Redwood**

*Sequoia sempervirens*

(Cupressaceae)

**Humboldt Redwoods State Park**

**California**





**2nd oldest .....**

**Alerce**

**Patagonian**

**Cypress**

**‘Gran Abuelo’**

***Fitzroya cupressoides***

**(Cupressaceae)**

**Parque Nacional**

**Alerce Costero, Chile**

**3622 years old**



**most  
photographed**

## **Monterey Cypress**

*Hesperocyparis macrocarpa*  
(Cupressaceae)

**Lone Cypress**

**17-mile drive, Pebble Beach  
California**



**in a  
movie**

**Monterey Cypress**

***Cupressus sempervirens***

**(Cupressaceae)**

San Quirico d'Orcia, Tuscany, Italy

General Maximus' home, *The Gladiator*



**most  
inspiring**

**Cypresses, Vincent van Gogh**

***Cupressus sempervirens***

**(Cupressaceae)**

**Van Gogh Museum, Netherlands**