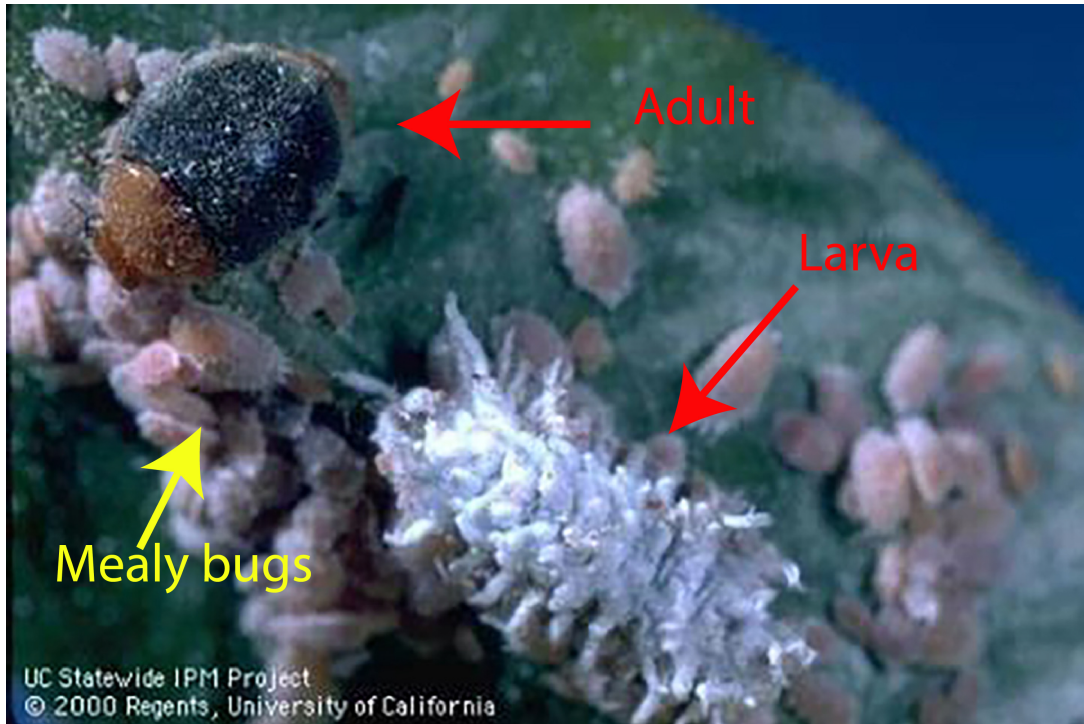


THE GOOD, THE BAD, AND THE BUGLY

March 1, 2016

GARDEN VISITOR - CLUE 1.



- Half-dome shaped with clubbed antennae, these dark brown or blackish beetle measure 3-4 mm long.
- The larva covered with waxy white curls that can be as large as 1.3 cm (1/2 inch)
- Eggs are yellow

GARDEN VISITOR - CLUE 2



- Member of the largest group of insects- Coleoptera (beetles), and the lady beetle family (Coccinellidae)
- Adults and older larva chew and consume their prey

GARDEN VISITOR - CLUE 3



- The alligator-shaped larva resemble mealy bugs except they are larger and more active
- Young larva pierce and suck contents from prey

GARDEN VISITOR - CLUE 4

- Both adults and larva feed on exposed mealy bugs such as the citrus mealy bug (above right) and other hemipterans (homopterans) such as the green shield scale (below right)



GARDEN VISITOR - CLUE 5



- Used or being tested as a biological pest control for grape vineyards and citrus orchards and greenhouses.
- Able to produce 4 generations per year
- Does not survive well in cold weather
- Adult beetles are available for purchase

ANSWER

- Common Name: Mealybug Destroyer
- Scientific Name: *Cryptolaemus montrouzieri*
- References
- http://www.ipm.ucdavis.edu/PMG/NE/mealybug_destroyer.html
- Mary Louise Flint and Steve H. Dreistadt. 1998. ***Natural Enemies Handbook. The Illustrated Guide to Biological Pest Control.***